



**ELECTRONIC COPY**

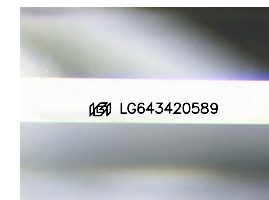
LG643420589  
Report verification at [igi.org](http://igi.org)



July 13, 2024  
IGI Report Number **LG643420589**  
Description **LABORATORY GROWN DIAMOND**  
Shape and Cutting Style **EMERALD CUT**  
Measurements **6.85 X 4.76 X 3.33 MM**

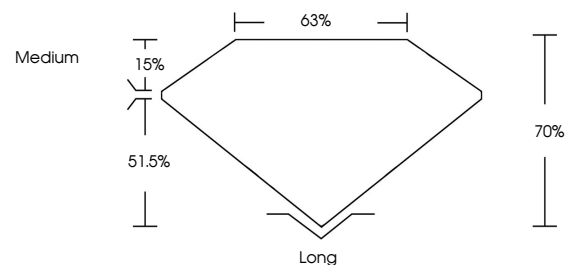
**GRADING RESULTS**

Carat Weight **1.08 CARAT**  
Color Grade **H**  
Clarity Grade **VVS 1**

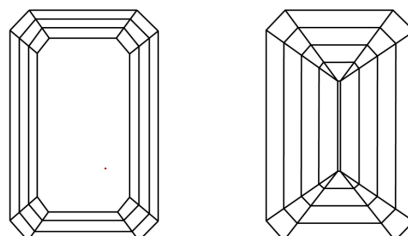


Sample Image Used

**PROPORTIONS**



**CLARITY CHARACTERISTICS**



**KEY TO SYMBOLS**

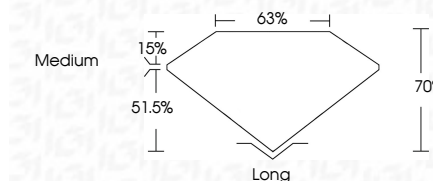
Red symbols indicate internal characteristics.  
Green symbols indicate external characteristics.

**COLOR**

D E F G H I J Faint Very Light Light

**CLARITY**

IF	VS <sup>1-2</sup>	VS <sup>1-2</sup>	SI <sup>1-2</sup>	I <sup>1-3</sup>
Internally Flawless	Very Very Slightly Included	Very Slightly Included	Slightly Included	Included



**ADDITIONAL GRADING INFORMATION**

Polish **EXCELLENT**  
Symmetry **EXCELLENT**  
Fluorescence **NONE**  
Inscription(s) **IGI LG643420589**  
Comments: This Laboratory Grown Diamond was created by Chemical Vapor Deposition (CVD) growth process.  
Type IIa



July 13, 2024  
IGI Report No. **LG643420589**  
**EMERALD CUT**  
6.85 X 4.76 X 3.33 MM  
Carat Weight **1.08 CARAT**  
Color Grade **H**  
Clarity Grade **VVS 1**  
Depth **51.5%**  
Table **15%**  
Girdle **Medium**  
Culet **Long**  
Polish **EXCELLENT**  
Symmetry **EXCELLENT**  
Fluorescence **NONE**  
Inscription(s) **IGI LG643420589**  
Comments: This Laboratory Grown Diamond was created by Chemical Vapor Deposition (CVD) growth process.  
Type IIa