

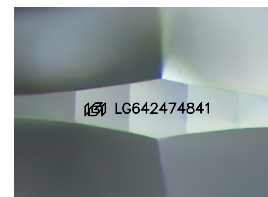
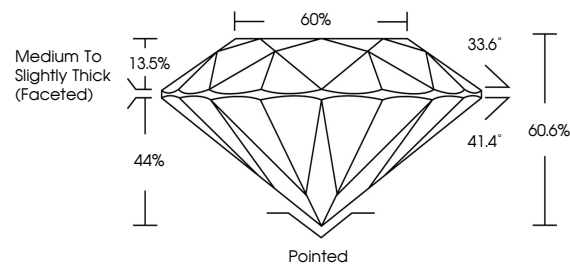


ELECTRONIC COPY

LABORATORY GROWN DIAMOND REPORT

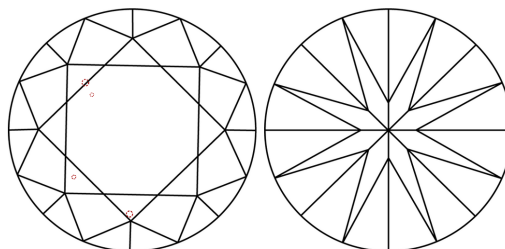
LG642474841
Report verification at igi.org

PROPORTIONS



Sample Image Used

CLARITY CHARACTERISTICS



KEY TO SYMBOLS

Red symbols indicate internal characteristics.
Green symbols indicate external characteristics.

COLOR

D E F G H I J Faint Very Light Light

CLARITY

IF	VVS ^{1,2}	VS ^{1,2}	SI ^{1,2}	I ^{1,3}
Internally Flawless	Very Very Slightly Included	Very Slightly Included	Slightly Included	Included



© IGI 2020, International Gemological Institute

FD - 10 20

www.igi.org

LABORATORY GROWN DIAMOND REPORT



July 9, 2024

IGI Report Number **LG642474841**Description **LABORATORY GROWN DIAMOND**Shape and Cutting Style **ROUND BRILLIANT**

Measurements 7.33 - 7.40 X 4.47 MM

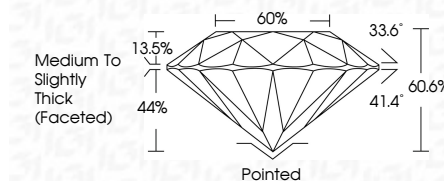
GRADING RESULTS

Carat Weight 1.48 CARAT

Color Grade E

Clarity Grade VS 1

Cut Grade **IDEAL**



ADDITIONAL GRADING INFORMATION

Polish **EXCELLENT**Symmetry **EXCELLENT**Fluorescence **NONE**Inscription(s) LG642474841

Comments: This Laboratory Grown Diamond was created by Chemical Vapor Deposition (CVD) growth process.
Type IIa



July 9, 2024	GL Report No. LG64674841	1.48 CARAT	VS 1	Polished	NONE	1691 LG64674841	Comments: The Laboratory Grown Diamond was synthesized using the Chemical Vapor Deposition (CVD) growth process. Type IIG
ROUND BRILLIANT		E	IDEAL	EXCELLENT			
			60.6%	EXCELLENT			
			65%				
			Medium to slightly Thick (fleshed)				
				Quiet			
				Polish			
				Symmetry			
				Fluorescence			
				Inscriptions(s)			