

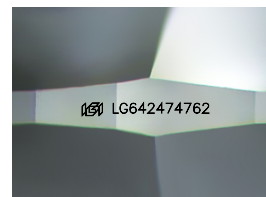
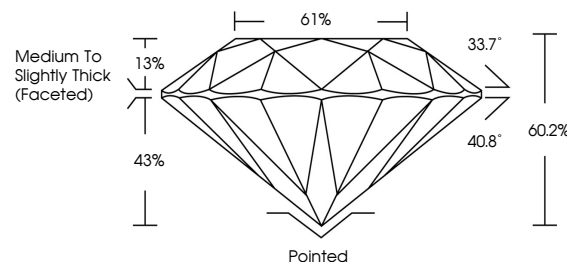


ELECTRONIC COPY

LABORATORY GROWN DIAMOND REPORT

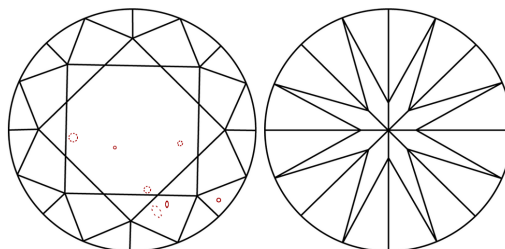
LG642474762
Report verification at lgi.org

PROPORTIONS



Sample Image Used

CLARITY CHARACTERISTICS



KEY TO SYMBOLS

Red symbols indicate internal characteristics.
Green symbols indicate external characteristics.

COLOR

D E F G H I J Faint Very Light Light

CLARITY

IF	VVS ¹⁻²	VS ¹⁻²	SI ¹⁻²	I ¹⁻³
Internally Flawless	Very Very Slightly Included	Very Slightly Included	Slightly Included	Included



© IGI 2020, International Gemological Institute

FD - 10 20

www.igi.org

LABORATORY GROWN DIAMOND REPORT



July 9, 2024

IGI Report Number **LG642474762**Description **LABORATORY GROWN DIAMOND**Shape and Cutting Style **ROUND BRILLIANT**

Measurements 7.26 - 7.33 X 4.39 MM

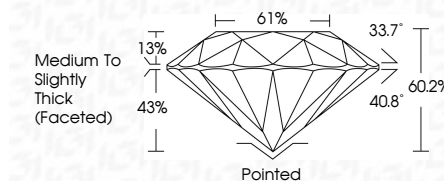
GRADING RESULTS

Carat Weight 1.46 CARAT

Color Grade **E**

Clarity Grade VS 2

Cut Grade **EXCELLENT**



ADDITIONAL GRADING INFORMATION

Polish **EXCELLENT**Symmetry **EXCELLENT**Fluorescence **NONE**Inscription(s) **113** LG642474762

Comments: This Laboratory Grown Diamond was created by Chemical Vapor Deposition (CVD) growth process.
Type IIa



IG

July 9, 2024
GI Report No LG642474762
ROUND BRILLIANT

2.26 - 2.33 X 4.39 MM	Carat Weight	1.46 CARAT
	Color Grade	E
	Clarity Grade	VS 2
	Cut Grade	EXCELLENT
	Depth	60.2%
	Table	61%
	Grade	Medium to Slightly Thick (Faceted)
	Culet	Pointed
	Polish	EXCELLENT
	Symmetry	EXCELLENT
	Fluorescence	NONE
	Comments	see 1249412745

Comments:
This Laboratory Grown Diamond was
created by Chemical Vapor Deposition
(CVD) growth process.