



ELECTRONIC COPY

LABORATORY GROWN DIAMOND REPORT

July 9, 2024	
IGI Report Number	LG642473145
Description	LABORATORY GROWN DIAMOND
Shape and Cutting Style	ROUND BRILLIANT
Measurements	6.45 - 6.49 X 4.02 MM

GRADING RESULTS

Carat Weight	1.04 CARAT
Color Grade	E
Clarity Grade	VVS 2
Cut Grade	IDEAL

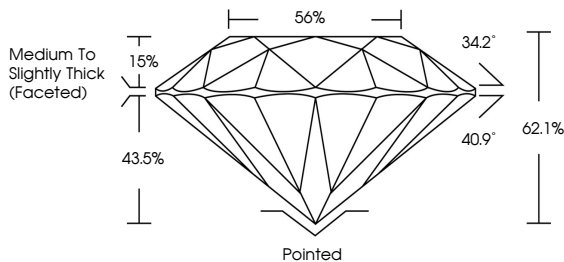
ADDITIONAL GRADING INFORMATION

Polish	EXCELLENT
Symmetry	EXCELLENT
Fluorescence	NONE
Inscription(s)	151 LG642473145

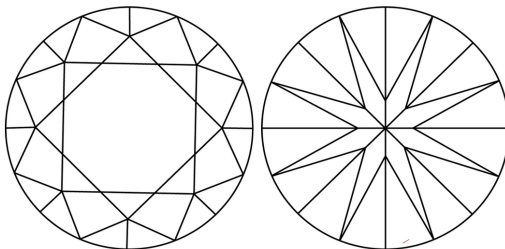
Comments: This Laboratory Grown Diamond was created by Chemical Vapor Deposition (CVD) growth process.
Type IIa

LG642473145
Report verification at igi.org

PROPORTIONS

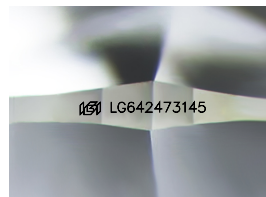


CLARITY CHARACTERISTICS



KEY TO SYMBOLS

Red symbols indicate internal characteristics.
Green symbols indicate external characteristics.



Sample Image Used

COLOR

D E F G H I J Faint Very Light Light

CLARITY

IF	VVS ¹⁻²	VS ¹⁻²	SI ¹⁻²	I ¹⁻³
Internally Flawless	Very Very Slightly Included	Very Slightly Included	Slightly Included	Included



© IGI 2020, International Gemological Institute

FD - 10 20

www.igi.org

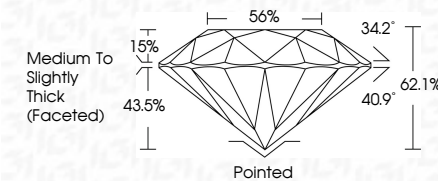
LABORATORY GROWN DIAMOND REPORT



July 9, 2024	
IGI Report Number	LG642473145
Description	LABORATORY GROWN DIAMOND
Shape and Cutting Style	ROUND BRILLIANT
Measurements	6.45 - 6.49 X 4.02 MM

GRADING RESULTS

Carat Weight	1.04 CARAT
Color Grade	E
Clarity Grade	VVS 2
Cut Grade	IDEAL



ADDITIONAL GRADING INFORMATION

Polish	EXCELLENT
Symmetry	EXCELLENT
Fluorescence	NONE
Inscription(s)	 LG642473145
<p>Comments: This Laboratory Grown Diamond was created by Chemical Vapor Deposition (CVD) growth process.</p> <p>Type IIa</p>	



IG

JUN 9, 2024	
IGI Report No. G64273146	
ROUND BRILLANT	
Weight: 6.46 - 6.49 X 4.02 MM	
Carat Weight	1.04 CARAT
Color Grade	E
Clarity Grade	VVS 2
Cut Grade	IDEAL
Depth	62.1%
Table	58%
Graile	Medium To Slightly Thick (Faceted)
Culet	Patched
Polish	EXCELLENT
Symmetry	EXCELLENT
Fluorescence	NONE
Inscription(s)	(g) G64273146
Comments:	The Laboratory Grown Diamond was created by Chemical Vapor Deposition growth process.
Type Ict	