

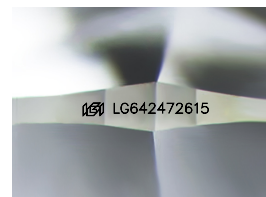
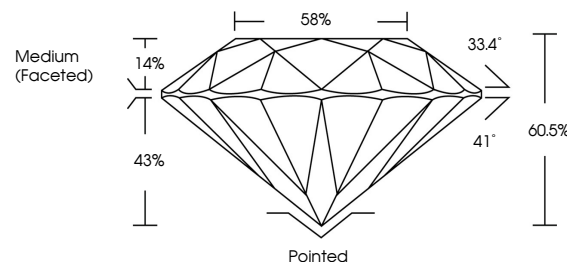


ELECTRONIC COPY

LABORATORY GROWN DIAMOND REPORT

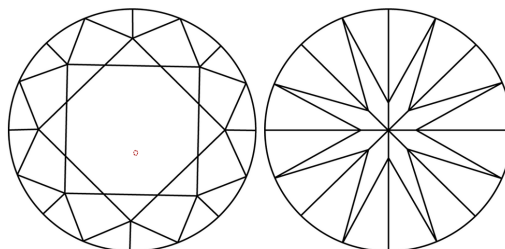
LG642472615
Report verification at lgi.org

PROPORTIONS



Sample Image Used

CLARITY CHARACTERISTICS



KEY TO SYMBOLS

Red symbols indicate internal characteristics.
Green symbols indicate external characteristics.

COLOR

D E F G H I J Faint Very Light Light

CLARITY

| IF | VS ^{1,2} | VS ^{1,2} | SI ^{1,2} | I ^{1,3} |
|---------------------|-----------------------------|------------------------|-------------------|------------------|
| Internally Flawless | Very Very Slightly Included | Very Slightly Included | Slightly Included | Included |



© IGI 2020, International Gemological Institute

FD - 10 20

www.igi.org

LABORATORY GROWN DIAMOND REPORT



July 9, 2024

IGI Report Number **LG642472615**

Description **LABORATORY GROWN DIAMOND**Shape and Cutting Style **ROUND BRILLIANT**

| | |
|--------------|-----------------------|
| Measurements | 6.63 - 6.64 X 4.02 MM |
|--------------|-----------------------|

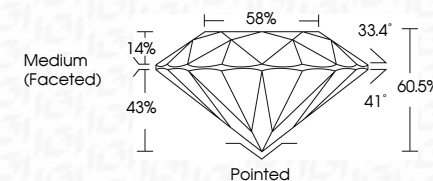
GRADING RESULTS

Carat Weight 1.08 CARAT

| | |
|-------------|---|
| Color Grade | E |
|-------------|---|

Clarity Grade **VVS 2**

Cut Grade **IDEAL**



ADDITIONAL GRADING INFORMATION

Polish **EXCELLENCE**Symmetry **EXCELLEN**

Fluorescence NONI

Inscription(s) LG642472615

Comments: This Laboratory Grown Diamond was created by Chemical Vapor Deposition (CVD) growth process.
Type IIa



| | | |
|--------------------------|-----------------|----------------|
| July 9, 2024 | Carat Weight | 1.08 CARAT |
| GI Report No. LG46072615 | Color Grade | E |
| ROUND BRILLIANT | Clarity Grade | VVS 2 |
| 6.85 - 6.64 X 4.02 MM | Cut Grade | IDEAL |
| | Depth | 60.5% |
| | Table | 58% |
| | Girdle | Medium (faced) |
| | Culet | Pointed |
| | Polish | EXCELLENT |
| | Symmetry | EXCELLENT |
| | Fluorescence | NONE |
| | Inscriptions(3) | 461 LG46072615 |

Comments:

The Laboratory Grown Diamond was
 synthesized by Chemical Vapor Deposition
 growth process.
 Type IIIa