



ELECTRONIC COPY

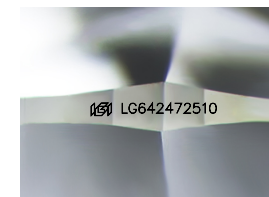
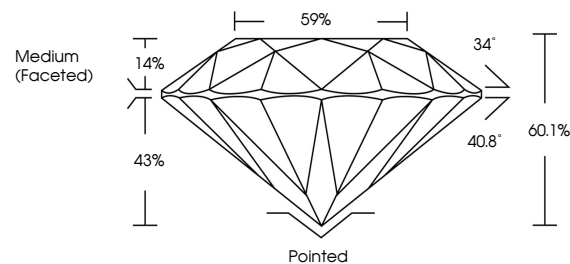
LG642472510
Report verification at igi.org



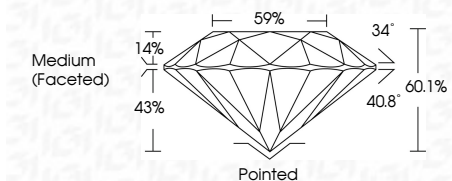
July 9, 2024
IGI Report Number LG642472510
Description LABORATORY GROWN DIAMOND
Shape and Cutting Style ROUND BRILLIANT
Measurements 6.90 - 6.90 X 4.15 MM
GRADING RESULTS
Carat Weight 1.21 CARAT
Color Grade H
Clarity Grade VVS 2
Cut Grade IDEAL

July 9, 2024
IGI Report Number LG642472510
Description LABORATORY GROWN DIAMOND
Shape and Cutting Style ROUND BRILLIANT
Measurements 6.90 - 6.90 X 4.15 MM

PROPORTIONS



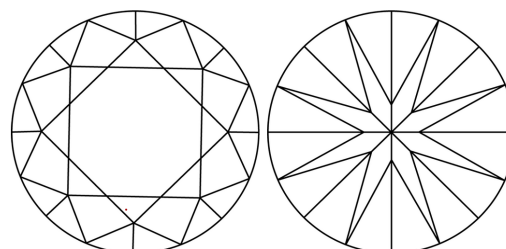
Sample Image Used



GRADING RESULTS

Carat Weight 1.21 CARAT
Color Grade H
Clarity Grade VVS 2
Cut Grade IDEAL

CLARITY CHARACTERISTICS



ADDITIONAL GRADING INFORMATION

Polish EXCELLENT
Symmetry EXCELLENT
Fluorescence NONE
Inscription(s) IGI LG642472510

ADDITIONAL GRADING INFORMATION

Polish EXCELLENT
Symmetry EXCELLENT
Fluorescence NONE
Inscription(s) IGI LG642472510
Comments: This Laboratory Grown Diamond was created by Chemical Vapor Deposition (CVD) growth process. Type IIa

COLOR

D E F G H I J Faint Very Light Light

CLARITY

IF VVS 1-2 VS 1-2 SI 1-2 I 1-3
Internally Flawless Very Very Slightly Included Very Slightly Included Slightly Included Included

KEY TO SYMBOLS

Red symbols indicate internal characteristics.
Green symbols indicate external characteristics.



July 9, 2024
IGI Report No LG642472510
ROUND BRILLIANT
6.90 - 6.90 X 4.15 MM
1.21 CARAT H
Color Grade VVS 2 IDEAL
Clarity Grade 60.1% 59%
Medium (Faceted)
Cut Grade IDEAL
Polish EXCELLENT
Symmetry EXCELLENT
Fluorescence NONE
Inscription(s) IGI LG642472510
Comments: This Laboratory Grown Diamond was created by Chemical Vapor Deposition (CVD) growth process. Type IIa