

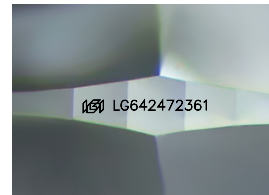
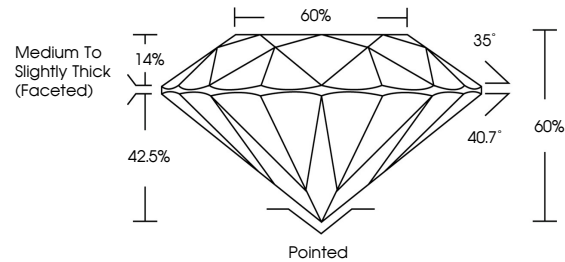


**INTERNATIONAL  
GEMOLOGICAL  
INSTITUTE**

**ELECTRONIC COPY**

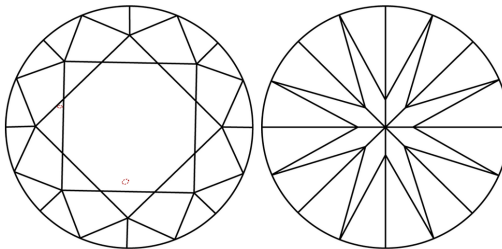
LG642472361  
Report verification at [igi.org](https://igi.org)

## PROPORTIONS



Sample Image Used

## CLARITY CHARACTERISTICS



## KEY TO SYMBOLS

Red symbols indicate internal characteristics.  
Green symbols indicate external characteristics.

**COLOR**

D E F G H I J Faint Very Light Light

## CLARITY

IF	WVS <sup>1-2</sup>	VS <sup>1-2</sup>	SI <sup>1-2</sup>	I <sup>1-3</sup>
Internally Flawless	Very Very Slightly Included	Very Slightly Included	Slightly Included	Included



© IGI 2020, International Gemological Institute

FD - 10 20

LABORATORY GROWN DIAMOND REPORT



July 9, 2024

IGI Report Number **LG642472361**

Description	LABORATORY GROWN DIAMOND
-------------	--------------------------

Shape and Cutting Style **ROUND BRILLIANT**

Measurements	8.05 - 8.10 X 4.85 MM
--------------	-----------------------

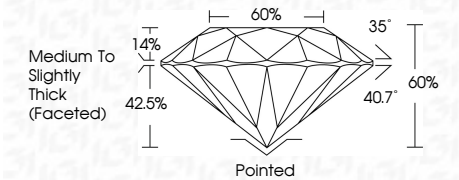
## GRADING RESULTS

Carat Weight **1.96 CARAT**

Color Grade	F
-------------	---

Clarity Grade VS 1

Cut Grade **IDEAL**



### ADDITIONAL GRADING INFORMATION

Polish **EXCELLENT**Symmetry **EXCELLENT**Fluorescence **NONE**Inscription(s)  LG642472361

Comments: This Laboratory Grown Diamond was created by Chemical Vapor Deposition (CVD) growth process.  
Type IIa



IGI

July 9, 2024	IGI Report No. IGA40472361
ROUND BRILLIANT	
4.05 - & 10 X 4.85 MM	1.96 CARAT
Color Grade	F
Clarity Grade	VS 1
Cut Grade	IDEAL
Depth	60%
Table	60%
Grade	Medium to Slightly Thick Faceted
Color	Pinkish
Polish	EXCELLENT
Symmetry	EXCELLENT
Fluorescence	NONE
Inscription(s)	IGI IGA40472361
Comments:	
	Very Fine Growth Diamond was created by Chemical Vapor Deposition (CVD) growth process.
Type IIA	