

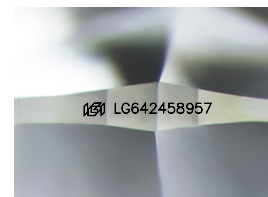
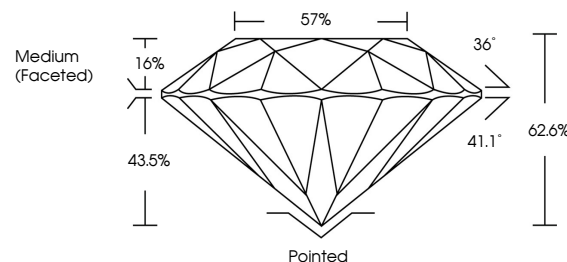


ELECTRONIC COPY

LABORATORY GROWN DIAMOND REPORT

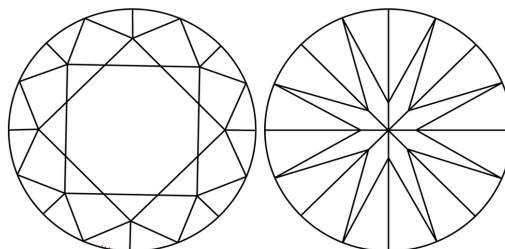
LG642458957
Report verification at iqi.org

PROPORTIONS



Sample Image Used

CLARITY CHARACTERISTICS



KEY TO SYMBOLS

Red symbols indicate internal characteristics.
Green symbols indicate external characteristics.

COLOR

D E F G H I J Faint Very Light Light

CLARITY

IF	VVS ¹⁻²	VS ¹⁻²	SI ¹⁻²	I ¹⁻³
Internally Flawless	Very Very Slightly Included	Very Slightly Included	Slightly Included	Included



© IGI 2020, International Gemological Institute

FD - 10 20

www.igi.org

LABORATORY GROWN DIAMOND REPORT



July 10, 2024

IGI Report Number **LG642458957**Description **LABORATORY GROWN DIAMOND**Shape and Cutting Style **ROUND BRILLIANT**

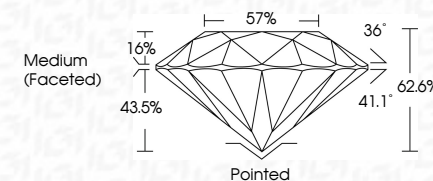
Measurements 6.57 - 6.59 X 4.12 MM

GRADING RESULTS

Carat Weight 1.09 CARAT

Color Grade **E**Clarity Grade WS 1

Cut Grade **EXCELLENT**



ADDITIONAL GRADING INFORMATION

Polish **EXCELLENT**Symmetry **EXCELLENT**Fluorescence **NONE**Inscription(s) LG642458957

Comments: This Laboratory Grown Diamond was created by Chemical Vapor Deposition (CVD) growth process.
Type IIa



July 10, 2024
GI Report No LG642458957
ROUND BRILLIANT

5.57 - 6.59 X 4.12 MM
Carat Weight 1.09 CARAT
Color Grade E

Clarity Grade	WS 1
Cut Grade	EXCELLENT
Depth	62.6%

	Table	Girdle	Medium (Faceted)	57%

Culet	Pointed
Polish	EXCELLENT
Symmetry	EXCELLENT
Fluorescence	NONE

Reference	151 LG642458957	NONE
Inscription(s)		

Comments:
This Laboratory Grown Diamond was created by Chemical Vapor Deposition (CVD) growth process.