

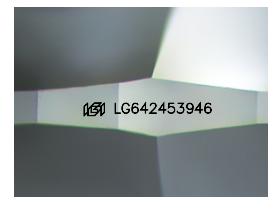
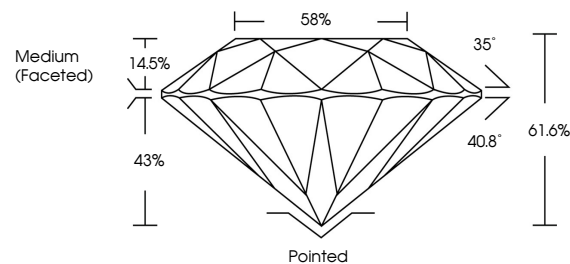


**ELECTRONIC COPY**

## LABORATORY GROWN DIAMOND REPORT

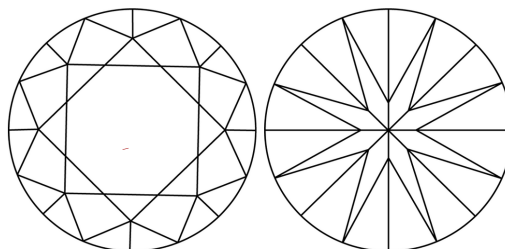
LG642453946  
Report verification at [igi.org](https://igi.org)

## PROPORTIONS



Sample Image Used

## CLARITY CHARACTERISTICS



## KEY TO SYMBOLS

Red symbols indicate internal characteristics.  
Green symbols indicate external characteristics.

## COLOR

D E F G H I J Faint Very Light Light

## CLARITY

IF	VVS <sup>1-2</sup>	VS <sup>1-2</sup>	SI <sup>1-2</sup>	I <sup>1-3</sup>
Internally Flawless	Very Very Slightly Included	Very Slightly Included	Slightly Included	Included



© IGI 2020, International Gemological Institute

FD - 10 20

**www.igi.org**

## LABORATORY GROWN DIAMOND REPORT



July 9, 2024

IGI Report Number **LG642453946**Description **LABORATORY GROWN DIAMOND**Shape and Cutting Style **ROUND BRILLIANT**

Measurements 6.58 - 6.59 X 4.06 MM

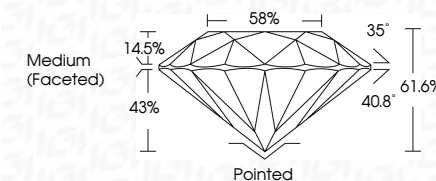
## GRADING RESULTS

Carat Weight 1.08 CARAT

Color Grade E

Clarity Grade WS 2

Cut Grade **IDEAL**



### ADDITIONAL GRADING INFORMATION

Polish **EXCELLENT**Symmetry **EXCELLENT**Fluorescence **NONE**Inscription(s)  LG642453946

Comments: This Laboratory Grown Diamond was created by Chemical Vapor Deposition (CVD) growth process.  
Type IIa



July 9, 2024	Report No. LG4245946	1.08 CARAT	E
ROUND BRILLIANT		VVS 2	IDEAL
		61.6%	85%
		Medium (Fosco)	
		Pointed	Excellent
		Excellent	Excellent
		None	None
		#69 LG4245946	
		Comments:	
		This Laboratory Grown Diamond was created by Chemical Vapor Deposition (CVD) growth process.	
		Type IIa	