

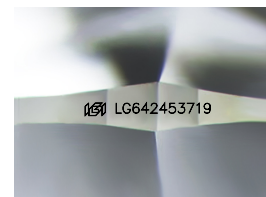
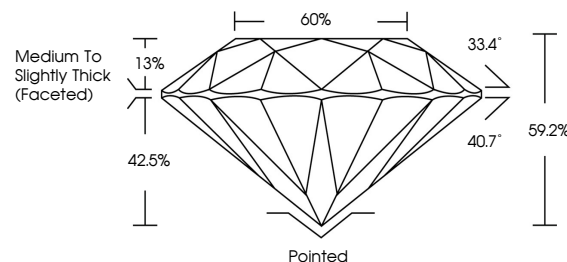


ELECTRONIC COPY

LABORATORY GROWN DIAMOND REPORT

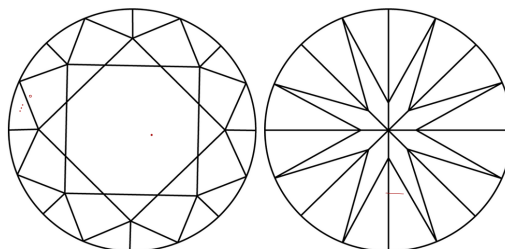
LG642453719
Report verification at lgi.org

PROPORTIONS



Sample Image Used

CLARITY CHARACTERISTICS



KEY TO SYMBOLS

Red symbols indicate internal characteristics.
Green symbols indicate external characteristics.

COLOR

D E F G H I J Faint Very Light Light

CLARITY

IF	VVS ¹⁻²	VS ¹⁻²	SI ¹⁻²	I ¹⁻³
Internally Flawless	Very Very Slightly Included	Very Slightly Included	Slightly Included	Included



© IGI 2020, International Gemological Institute

FD - 10 20

www.igi.org

LABORATORY GROWN DIAMOND REPORT



July 8, 2024

IGI Report Number **LG642453719**Description **LABORATORY GROWN DIAMOND**Shape and Cutting Style **ROUND BRILLIANT**

Measurements 7.37 - 7.37 X 4.36 MM

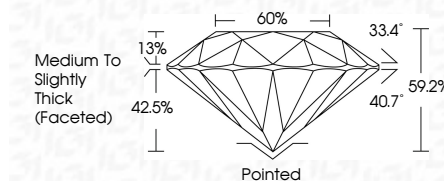
GRADING RESULTS

Carat Weight **1.46 CARAT**

Color Grade E

Clarity Grade VS 2

Cut Grade **IDEAL**



ADDITIONAL GRADING INFORMATION

Polish **EXCELLEN**Symmetry **EXCELLENCE**

Fluorescence NONI

Inscription(s) LG642453719

Comments: This Laboratory Grown Diamond was created by Chemical Vapor Deposition (CVD) growth process.
Type IIa



July 8, 2024	Report No. LG542483719	1.46 CARAT
ROUND BRILLIANT		
	Color Grade	
	Clarity Grade	VS 2
	Cut Grade	IDEAL
	Depth	59.2%
	Table	65%
	Girdle	Medium to slightly Thick (Faceted)
	Culet	Pointed
	Polish	EXCELLENT
	Symmetry	EXCELLENT
	Fluorescence	NONE
	Inscriptions(s)	lg51 LG542483719
<p>Comments:</p> <p>This Laboratory Grown Diamond was created by Chemical Vapor Deposition (CVD) growth process.</p> <p>Type IId</p>		