

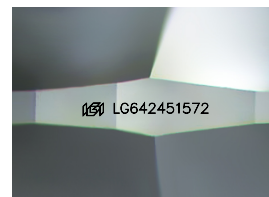
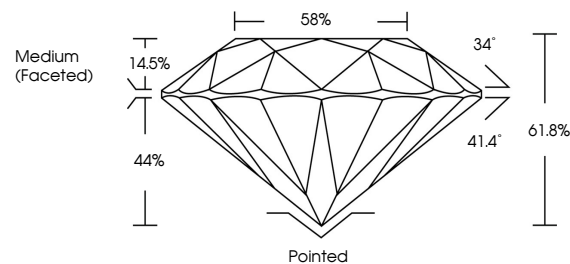


**ELECTRONIC COPY**

## LABORATORY GROWN DIAMOND REPORT

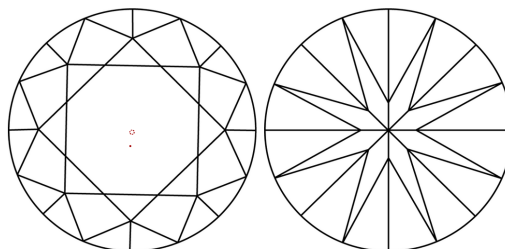
LG642451572  
Report verification at [lgi.org](https://lgi.org)

## PROPORTIONS



Sample Image Used

## CLARITY CHARACTERISTICS



### KEY TO SYMBOLS

Red symbols indicate internal characteristics.  
Green symbols indicate external characteristics.

## COLOR

D E F G H I J Faint Very Light Light

## CLARITY

IF	VVS <sup>1-2</sup>	VS <sup>1-2</sup>	SI <sup>1-2</sup>	I <sup>1-3</sup>
Internally Flawless	Very Very Slightly Included	Very Slightly Included	Slightly Included	Included



© IGI 2020, International Gemological Institute

FD - 10 20

**www.igi.org**

## LABORATORY GROWN DIAMOND REPORT



July 9, 2024

IGI Report Number **LG642451572**Description **LABORATORY GROWN DIAMOND**Shape and Cutting Style **ROUND BRILLIANT**

Measurements	6.58 - 6.61 X 4.08 MM
--------------	-----------------------

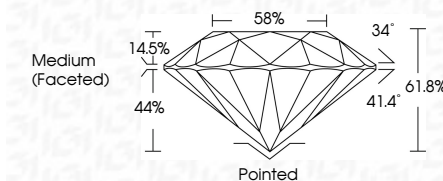
## GRADING RESULTS

Carat Weight **1.08 CARAT**

Color Grade	D
-------------	---

Clarity Grade VS 1

Cut Grade **IDEAL**



### ADDITIONAL GRADING INFORMATION

Polish **EXCELLENT**Symmetry **EXCELLENT**Fluorescence **NONE**Inscription(s)  LG642451572

Comments: This Laboratory Grown Diamond was created by Chemical Vapor Deposition (CVD) growth process.  
Type IIa



July 9, 2024  
GI Report No LG642451572  
ROUND BRILLIANT

<b>CONCRETE</b>	<b>6.58 - 6.61 X .008 MM</b>	<b>1.08 CARAT D</b>
Color Weight	Color Grade	VSI
Clarity Grade	Cut Grade	IDPAL
Depth	Table	61.9%
Girdle		58%
		Medium (Faceted)
Culet		Poined
Polish		EXCELLENT
Symmetry		EXCELLENT
Fluorescence		NONE
Measurements		mm (.64/.64) x .075

**Comments:**  
This Laboratory Grown Diamond was  
created by Chemical Vapor Deposition  
(CVD) growth process.