

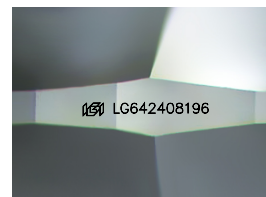
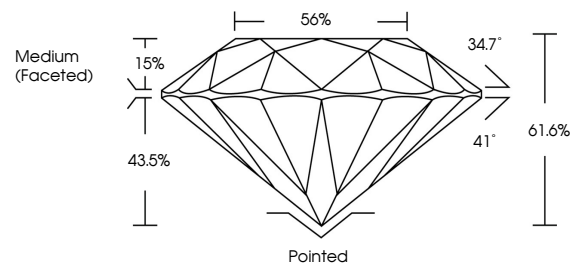


ELECTRONIC COPY

LABORATORY GROWN DIAMOND REPORT

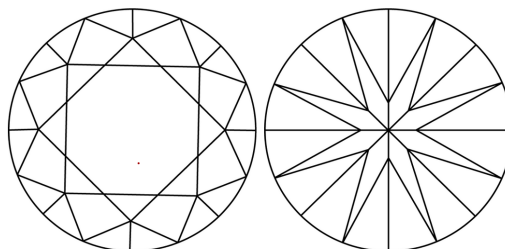
LG642408196
Report verification at lgi.org

PROPORTIONS



Sample Image Used

CLARITY CHARACTERISTICS



KEY TO SYMBOLS

Red symbols indicate internal characteristics.
Green symbols indicate external characteristics.

COLOR

D E F G H I J Faint Very Light Light

CLARITY

IF	VVS ¹⁻²	VS ¹⁻²	SI ¹⁻²	I ¹⁻³
Internally Flawless	Very Very Slightly Included	Very Slightly Included	Slightly Included	Included



© IGI 2020, International Gemological Institute

FD - 10 20

www.igi.org

LABORATORY GROWN DIAMOND REPORT



July 12, 2024

IGI Report Number **LG642408196**Description **LABORATORY GROWN DIAMOND**Shape and Cutting Style **ROUND BRILLIANT**

Measurements 6.52 - 6.56 X 4.03 MM

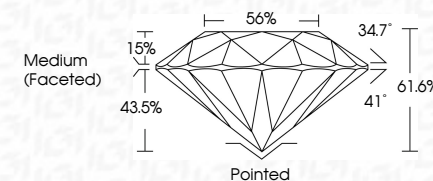
GRADING RESULTS

Carat Weight 1.06 CARAT

Color Grade

Clarity Grade WS 2

Cut Grade **IDEAL**



ADDITIONAL GRADING INFORMATION

Polish **EXCELLENT**Symmetry **EXCELLENT**Fluorescence **NONE**Inscription(s) LG642408196

Comments: This Laboratory Grown Diamond was created by Chemical Vapor Deposition (CVD) growth process.
Type IIa



July 12, 2024	1.06 CARAT
GI Report No. LG542408196	E
ROUND BRILLIANT	VVS 2
	IDEAL
	61.6%
	56%
	Medium (Faceted)
	Pointed
	EXCELLENT
	EXCELLENT
	NONE
	lg542408196
Comments:	
The Laboratory Crown Diamond was	
certified for natural origin by the	
GDV growth process.	
Type IIA	