

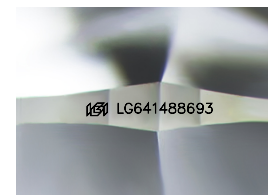
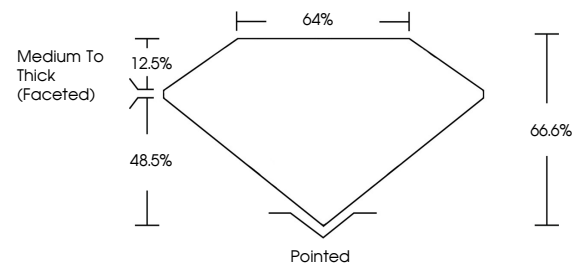


ELECTRONIC COPY

LABORATORY GROWN DIAMOND REPORT

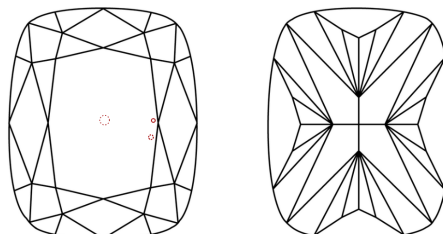
LG641488693
Report verification at igi.org

PROPORTIONS



Sample Image Used

CLARITY CHARACTERISTICS



KEY TO SYMBOLS

Red symbols indicate internal characteristics.
Green symbols indicate external characteristics.

COLOR

D E F G H I J Faint Very Light Light

CLARITY

IF	VS ^{1,2}	VS ^{1,2}	SI ^{1,2}	I ^{1,3}
Internally Flawless	Very Very Slightly Included	Very Slightly Included	Slightly Included	Included

LABORATORY GROWN DIAMOND REPORT



July 1, 2024

IGI Report Number **LG641488693**Description **LABORATORY GROWN DIAMOND**Shape and Cutting Style **CUSHION BRILLIANT**

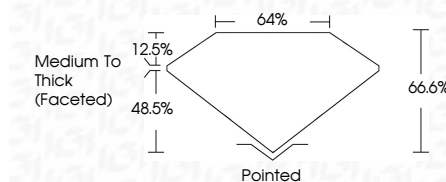
Measurements 9.00 X 6.46 X 4.30 MM

GRADING RESULTS

Carat Weight **2.05 CARATS**

Color Grade

Clarity Grade VS 2



ADDITIONAL GRADING INFORMATION

Polish **EXCELLENCE**Symmetry **EXCELLENCE**Fluorescence NONInscription(s)  LG64148869

Comments: This Laboratory Grown Diamond was created by Chemical Vapor Deposition (CVD) growth process.
Type IIa



www.igi.org

© IGI 2020, International Gemological Institute

FD - 10 20



THIS DOCUMENT WAS PRODUCED WITH THE FOLLOWING SECURITY MEASURES: SPECIAL DOCUMENT PAPER, INK SCREENS, WATERMARK, BACKGROUND DESIGNS, HOLOGRAM AND OTHER SECURITY FEATURES NOT LISTED AND DO EXCEED DOCUMENT SECURITY INDUSTRY GUIDELINE

July 1, 2024	2.05 CARATS
GL Report No. LGS41488493	F
CUSHION BRILLIANT	VS 2
0.00 X 6.45 X 4.30 MM	66.0%
	64%
	Medium to Thick (Faceted)
	Polished
	Excellent
	Excellent
	NONE
	1691 LGS41488493

Comments:

This Laboratory Grown Diamond was produced using the Chemical Vapor Deposition (CVD) growth process.

Type IIG