

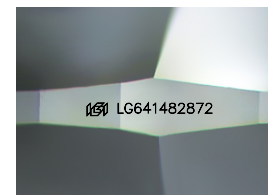
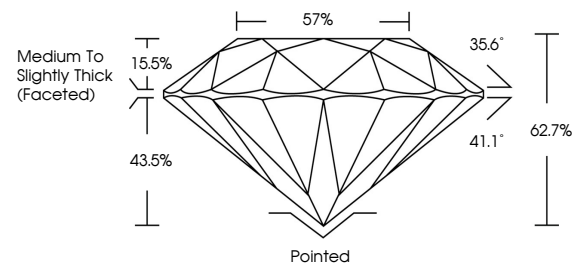


**ELECTRONIC COPY**

## LABORATORY GROWN DIAMOND REPORT

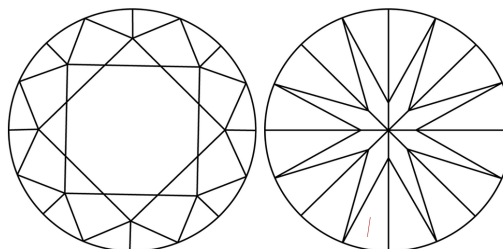
LG641482872  
Report verification at [igi.org](https://igi.org)

## PROPORTIONS



Sample Image Used

## CLARITY CHARACTERISTICS



## KEY TO SYMBOLS

Red symbols indicate internal characteristics.  
Green symbols indicate external characteristics.

## COLOR

D E F G H I J Faint Very Light Light

## CLARITY

IF VWS<sup>1-2</sup> VS<sup>1-2</sup> S<sup>1-2</sup> |<sup>1-3</sup>

Internally Flawless	Very Very Slightly Included	Very Slightly Included	Slightly Included	Included
------------------------	--------------------------------	---------------------------	----------------------	----------

## LABORATORY GROWN DIAMOND REPORT



July 2, 2024

IGI Report Number **LG641482872**

Description	LABORATORY GROWN DIAMOND
-------------	--------------------------

Shape and Cutting Style **ROUND BRILLIANT**

Measurements 7.95 - 7.97 X 5.00 MM

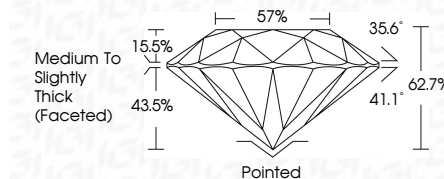
## GRADING RESULTS

Carat Weight 1.96 CARAT

Color Grade

Clarity Grade VS 1

Cut Grade **EXCELLENT**



### ADDITIONAL GRADING INFORMATION

Polish **EXCELLENT**Symmetry **EXCELLENT**Fluorescence **NONE**Inscription(s)  LG641482872

Comments: This Laboratory Grown Diamond was created by Chemical Vapor Deposition (CVD) growth process.

Type IIa



July 2, 2024	GL Report No. G641462872	ROUND BRILLIANT	1.96 CARAT F	VSI	EXCELLENT	62.7%	57%	Medium to Slightly Thick (facefeet)	Pointed	EXCELLENT	EXCELLENT	NONE	1691 G641462872	Comments: The Laboratory Grown Diamond was certified by the International Gemological Union (IGI) as a "Lab grown" product. Type IIA
		ROUND BRILLIANT	1.96 CARAT F	VSI	EXCELLENT	62.7%	57%	Medium to Slightly Thick (facefeet)	Pointed	EXCELLENT	EXCELLENT	NONE	1691 G641462872	Comments: The Laboratory Grown Diamond was certified by the International Gemological Union (IGI) as a "Lab grown" product. Type IIA