

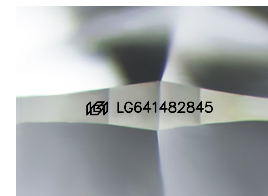
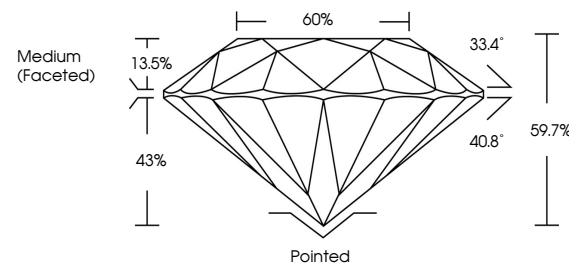


**ELECTRONIC COPY**

## LABORATORY GROWN DIAMOND REPORT

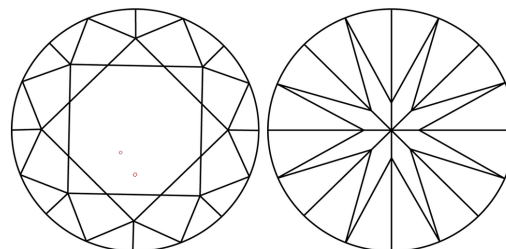
LG641482845  
Report verification at [igi.org](https://igi.org)

## PROPORTIONS



Sample Image Used

## CLARITY CHARACTERISTICS



## KEY TO SYMBOLS

Red symbols indicate internal characteristics.  
Green symbols indicate external characteristics.

## COLOR

D E F G H I J Faint Very Light Light

## CLARITY

IF	VVS <sup>1,2</sup>	VS <sup>1,2</sup>	SI <sup>1,2</sup>	I <sup>1,3</sup>
Internally Flawless	Very Very Slightly Included	Very Slightly Included	Slightly Included	Included

## LABORATORY GROWN DIAMOND REPORT



July 2, 2024

IGI Report Number **LG641482845**

Description	LABORATORY GROWN DIAMOND
-------------	--------------------------

Shape and Cutting Style **ROUND BRILLIANT**

Measurements 6.69 - 6.67 X 3.98 MM

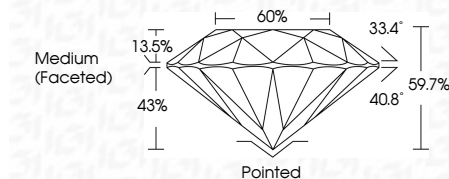
## GRADING RESULTS

Carat Weight **1.09 CARAT**

Color Grade D

Clarity Grade VS 1

Cut Grade **IDEAL**



### ADDITIONAL GRADING INFORMATION

Polish **EXCELLEN**Symmetry **EXCELLEN**Fluorescence NONIInscription(s)  LG641482845

Comments: This Laboratory Grown Diamond was created by Chemical Vapor Deposition (CVD) growth process.  
Type IIa



© IGI 2020, International Gemological Institute

FD - 10 20

**www.igi.org**

THIS DOCUMENT WAS PRODUCED WITH THE FOLLOWING SECURITY MEASURES: SPECIAL DOCUMENT PAPER, INK SCREENS, WATERMARK BACKGROUND DESIGNS, HOLOGRAM AND OTHER SECURITY FEATURES NOT LISTED AND DO EXCEED DOCUMENT SECURITY INDUSTRY GUIDELINES

July 2, 2024	1.09 CARAT	Color Grade	VS 1	Polished	Excellent	None	<b>Comments:</b> This is a Crown Diamond was created by Chemical Vapor Deposition (CVD) growth process. Type IIa
GI Report No. G541482845	D	Clarity Grade	IDEAL	Excellent	Excellent	161 G541482845	
ROUND BRILLIANT	Carat Weight	Color Grade	69.7%	Symmetry	Excellent		
	1.09 - 1.07 X 5.98 MM	Clarity Grade	60%	Fluorescence	None		
		Carat Weight	Medium (Faceted)	Inscriptions(s)			