

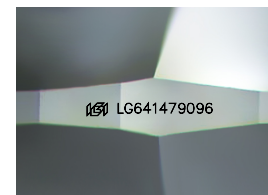
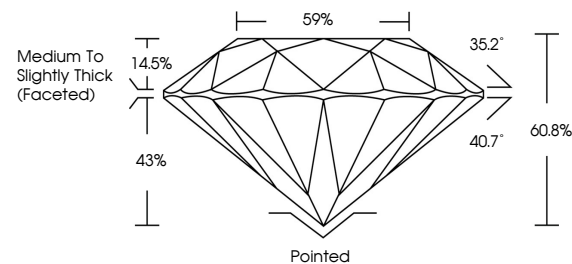


ELECTRONIC COPY

LABORATORY GROWN DIAMOND REPORT

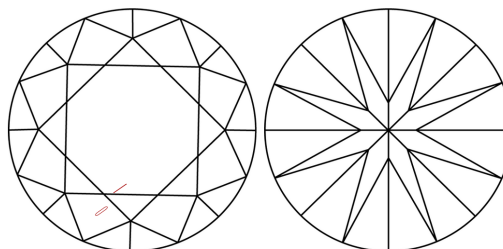
LG641479096
Report verification at igi.org

PROPORTIONS



Sample Image Used

CLARITY CHARACTERISTICS



KEY TO SYMBOLS

Red symbols indicate internal characteristics.
Green symbols indicate external characteristics.

COLOR

D E F G H I J Faint Very Light Light

CLARITY

IF	VVS ^{1,2}	VS ^{1,2}	SI ^{1,2}	I ^{1,3}
Internally Flawless	Very Very Slightly Included	Very Slightly Included	Slightly Included	Included

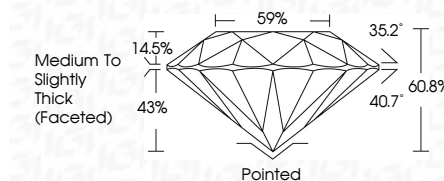
LABORATORY GROWN DIAMOND REPORT



July 2, 2024	
IGI Report Number	LG641479096
Description	LABORATORY GROWN DIAMOND
Shape and Cutting Style	ROUND BRILLIANT
Measurements	8.08 - 8.13 X 4.92 MM

GRADING RESULTS

Carat Weight	1.99 CARAT
Color Grade	E
Clarity Grade	SI 1
Cut Grade	IDEAL



ADDITIONAL GRADING INFORMATION

Polish	EXCELLENT
Symmetry	EXCELLENT
Fluorescence	NONE
Inscription(s)	 LG641479096
Comments: This Laboratory Grown Diamond was created by Chemical Vapor Deposition (CVD) growth process.	
Type IIa	



© IGI 2020, International Gemological Institute

FD - 10 20



THIS DOCUMENT WAS PRODUCED WITH THE FOLLOWING SECURITY MEASURES: SPECIAL DOCUMENT PAPER, INK SCREENS, WATERMARK, BACKGROUND DESIGNS, HOLOGRAM AND OTHER SECURITY FEATURES NOT LISTED AND DO EXCEED DOCUMENT SECURITY INDUSTRY GUIDELINE

www.igi.org

July 2, 2024
GJ Report No. [G64]479096

July 2, 2024
 IGI Report No LG64
 ROUND BRILLIANT

ROUND BRILLIANT
8.08 - 8.13 X 4.92 MM

1.99 CARAT

Color Grade E

Clarity Grade	SI 1
Cut Grade	IDEAL

Current Grade	IDEAL
Depth	60.8%

Table	59%
Girdle	Medium To Slightly

Medium to slightly
Thick (Faceted)

	Pointed	EXCELLENT
Culet		
Polish		

Polish	EXCELLENT
Symmetry	EXCELLENT

Fluorescence	NONE
Inscription(s)	151 LG641479096

Comments:

Comments:
This Laboratory Grown Diamond was
created by Chemical Vapor Deposition

created by Chemical Vapor Deposition (CVD) growth process, Type IIa

type III