



ELECTRONIC COPY

LG641475232
Report verification at igi.org



June 29, 2024

IGI Report Number **LG641475232**

Description **LABORATORY GROWN DIAMOND**

Shape and Cutting Style **ROUND BRILLIANT**

Measurements **8.21 - 8.18 X 5.03 MM**

GRADING RESULTS

Carat Weight **2.10 CARATS**

Color Grade **H**

Clarity Grade **VVS 2**

Cut Grade **IDEAL**

June 29, 2024
IGI Report Number **LG641475232**
Description **LABORATORY GROWN DIAMOND**
Shape and Cutting Style **ROUND BRILLIANT**
Measurements **8.21 - 8.18 X 5.03 MM**

GRADING RESULTS

Carat Weight **2.10 CARATS**

Color Grade **H**

Clarity Grade **VVS 2**

Cut Grade **IDEAL**

ADDITIONAL GRADING INFORMATION

Polish **EXCELLENT**

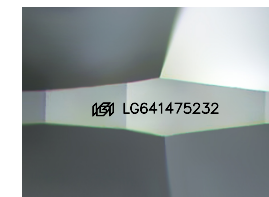
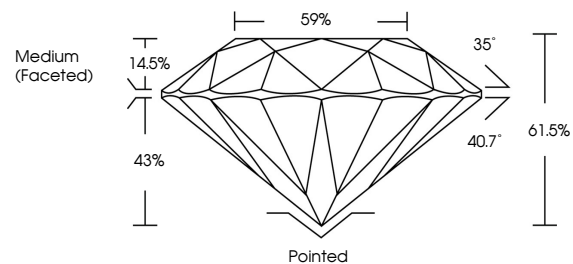
Symmetry **EXCELLENT**

Fluorescence **NONE**

Inscription(s) **LG641475232**

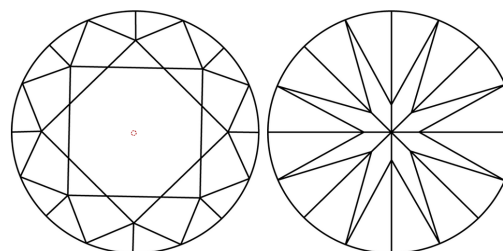
Comments: This Laboratory Grown Diamond was created by Chemical Vapor Deposition (CVD) growth process.
Type IIa

PROPORTIONS



Sample Image Used

CLARITY CHARACTERISTICS



KEY TO SYMBOLS

Red symbols indicate internal characteristics.
Green symbols indicate external characteristics.

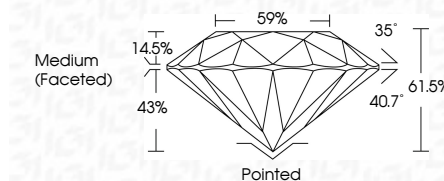
COLOR

D E F G H I J Faint Very Light Light

CLARITY

IF VVS¹⁻² VS¹⁻² SI¹⁻² I¹⁻³

Internally Flawless Very Very Slightly Included Very Slightly Included Slightly Included Included



ADDITIONAL GRADING INFORMATION

Polish **EXCELLENT**

Symmetry **EXCELLENT**

Fluorescence **NONE**

Inscription(s) **LG641475232**

Comments: This Laboratory Grown Diamond was created by Chemical Vapor Deposition (CVD) growth process.
Type IIa



IGI



June 29, 2024	IGI Report No LG641475232	2.10 CARATS	H	Pointed	EXCELLENT	EXCELLENT	NONE	LG641475232
ROUND BRILLIANT	8.21 - 8.18 X 5.03 MM	Color Grade	VVS 2	Depth	IDEAL	61.5%	Medium (Faceted)	
Carat Weight	2.10 CARATS	Clarity Grade	VVS 2	Girdle	IDEAL	59%		
Color Grade	H	Cut Grade	IDEAL	Culet	None			
Clarity Grade	VVS 2	Polish	EXCELLENT	Polish	EXCELLENT			
Depth	61.5%	Symmetry	EXCELLENT	Symmetry	EXCELLENT			
Table	14.5%	Fluorescence	NONE	Fluorescence	NONE			
Girdle	Medium (Faceted)	Inscription(s)	LG641475232	Inscription(s)	LG641475232			

Comments: This Laboratory Grown Diamond was created by Chemical Vapor Deposition (CVD) growth process.
Type IIa