

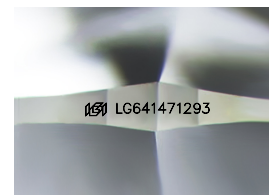
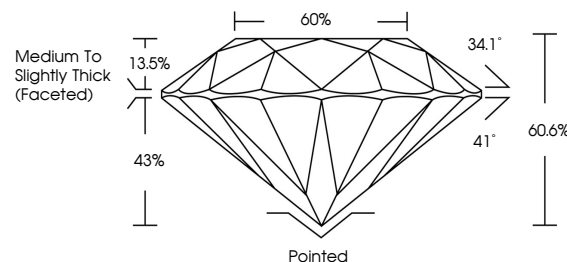


ELECTRONIC COPY

LABORATORY GROWN DIAMOND REPORT

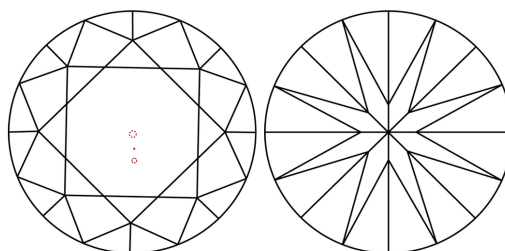
LG641471293
Report verification at lgi.org

PROPORTIONS



Sample Image Used

CLARITY CHARACTERISTICS



KEY TO SYMBOLS

Red symbols indicate internal characteristics.
Green symbols indicate external characteristics.

COLOR

D E F G H I J Faint Very Light Light

CLARITY

IF	VVS ^{1,2}	VS ^{1,2}	SI ^{1,2}	I ^{1,3}
Internally Flawless	Very Very Slightly Included	Very Slightly Included	Slightly Included	Included

LABORATORY GROWN DIAMOND REPORT



June 29, 2024

IGI Report Number **LG641471293**

Description	LABORATORY GROWN DIAMOND
-------------	--------------------------

Shape and Cutting Style **ROUND BRILLIANT**

Measurements 6.61 - 6.65 X 4.02 MM

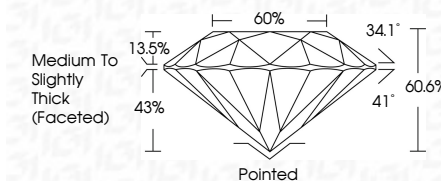
GRADING RESULTS

Carat Weight 1.09 CARAT

Color Grade E

Clarity Grade VS 1

Cut Grade **IDEAL**



ADDITIONAL GRADING INFORMATION

Polish **EXCELLENT**Symmetry **EXCELLENT**Fluorescence **NONE**Inscription(s) LG641471293

Comments: This Laboratory Grown Diamond was created by Chemical Vapor Deposition (CVD) growth process.
Type IIa



© IGI 2020, International Gemological Institute

FD - 10 20

www.igi.org

THIS DOCUMENT WAS PRODUCED WITH THE FOLLOWING SECURITY MEASURES: SPECIAL DOCUMENT PAPER, INK SCREENS, WATERMARK BACKGROUND DESIGNS, HOLOGRAM AND OTHER SECURITY FEATURES NOT LISTED AND DO EXCEED DOCUMENT SECURITY INDUSTRY GUIDELINES

June 29, 2024	Report No. US6417293	1.07 CARAT	VSI	Ported	None	Comments: The Laboratory Chemical Diamond was created by Chemical Vapor Deposition (CVD) growth process. Type IIa
ROUND BRILLIANT			IDEAL	EXCELLENT	EXCELLENT	
			60.6%	EXCELLENT	NONE	
			0.0%	Medium to Slightly Thick (Faceted)	US6417293	
		Color Grade	Clarity Grade	Cut Grade	Symmetry	
	Carat Weight				Fluorescence	
	1.61 - 1.65 X 1.02 MM				(g) US6417293	