



**ELECTRONIC COPY**

## LABORATORY GROWN DIAMOND REPORT

July 4, 2024	
IGI Report Number	LG641408606
Description	LABORATORY GROWN DIAMOND
Shape and Cutting Style	ROUND BRILLIANT
Measurements	9.96 - 9.99 X 6.04 MM

## GRADING RESULTS

Carat Weight	3.69 CARATS
Color Grade	F
Clarity Grade	VS 2
Cut Grade	IDEAL

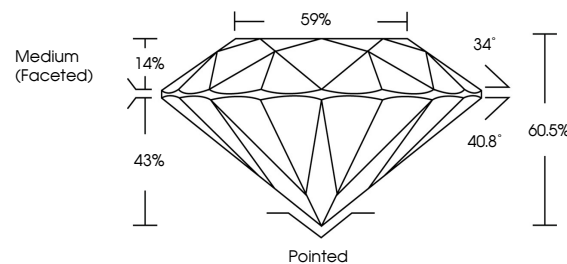
### ADDITIONAL GRADING INFORMATION

Polish	EXCELLENT
Symmetry	EXCELLENT
Fluorescence	NONE
Inscription(s)	 LG641408606

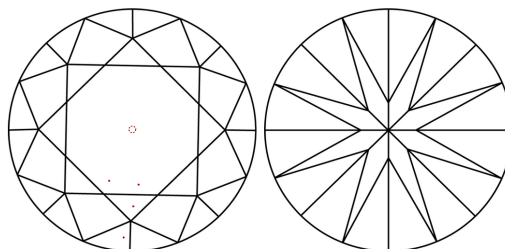
Comments: This Laboratory Grown Diamond was created by Chemical Vapor Deposition (CVD) growth process.  
Type IIa

LG641408606  
Report verification at [igi.org](https://igi.org)

## PROPORTIONS

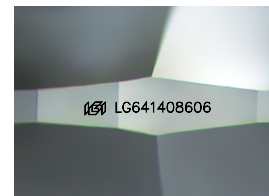


## CLARITY CHARACTERISTICS



## KEY TO SYMBOLS

Red symbols indicate internal characteristics.  
Green symbols indicate external characteristics.



Sample Image Used

## COLOR

D E F G H I J Faint Very Light Light

## CLARITY

IF                  WS<sup>1-2</sup>                  VS<sup>1-2</sup>                  SI<sup>1-2</sup>                  I<sup>1-3</sup>

Internally Flawless	Very Very Slightly Included	Very Slightly Included	Slightly Included	Included
------------------------	--------------------------------	---------------------------	----------------------	----------

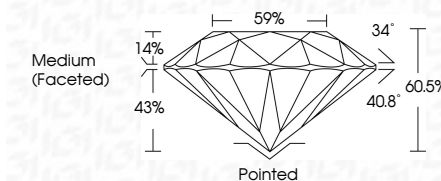
## LABORATORY GROWN DIAMOND REPORT



July 4, 2024	
IGI Report Number	LG641408606
Description	LABORATORY GROWN DIAMOND
Shape and Cutting Style	ROUND BRILLIANT
Measurements	9.96 - 9.99 X 6.04 MM

## GRADING RESULTS

Carat Weight	3.69 CARATS
Color Grade	F
Clarity Grade	VS 2
Cut Grade	IDEAL



### ADDITIONAL GRADING INFORMATION

Polish	EXCELLENT
Symmetry	EXCELLENT
Fluorescence	NONE
Inscription(s)	 LG641408606
<p>Comments: This Laboratory Grown Diamond was created by Chemical Vapor Deposition (CVD) growth process.</p> <p>Type IIa</p>	



© IGI 2020, International Gemological Institute

FD - 10 20

**www.igi.org**

THIS DOCUMENT WAS PRODUCED WITH THE FOLLOWING SECURITY MEASURES: SPECIAL DOCUMENT PAPER, INK SCREENS, WATERMARK, BACKGROUND DESIGNS, HOLOGRAM AND OTHER SECURITY FEATURES NOT LISTED AND DO EXCEED DOCUMENT SECURITY INDUSTRY GUIDELINES

July 4, 2024	GL Report No. LGS41408606	
ROUND BRILLIANT		
9.96 - 9.99 X 6.04 MM		
Carat Weight	3.69 CARATS	
Color Grade	F	
Clarity Grade	VS 2	
Cut Grade	IDEAL	
Depth	60.5%	
Table	59%	
Girdle	Medium (Faced)	
Culet	Pointed	
Polish	EXCELLENT	
Symmetry	EXCELLENT	
Fluorescence	NONE	
Inscriptions(s)	1691 LGS41408606	
<b>Comments:</b> This is a Laboratory Grown Diamond was identified by Chemical Vapor Deposition (CVD) growth process.		
Type IIa		