

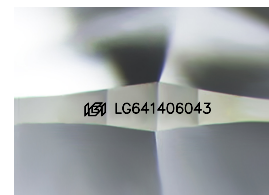
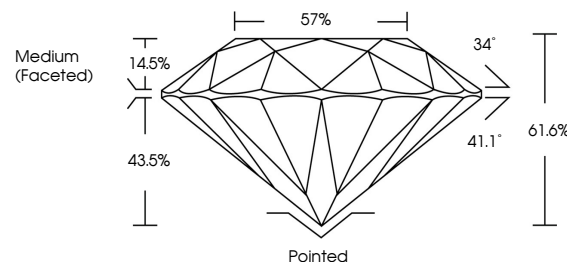


**ELECTRONIC COPY**

## LABORATORY GROWN DIAMOND REPORT

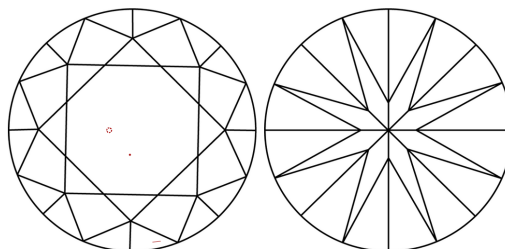
LG641406043  
Report verification at [lgi.org](https://lgi.org)

## PROPORTIONS



Sample Image Used

## CLARITY CHARACTERISTICS



### KEY TO SYMBOLS

Red symbols indicate internal characteristics.  
Green symbols indicate external characteristics.

## COLOR

D E F G H I J Faint Very Light Light

## CLARITY

IF      WS<sup>1-2</sup>      VS<sup>1-2</sup>      SI<sup>1-2</sup>      |<sup>1-3</sup>

Internally Flawless	Very Very Slightly Included	Very Slightly Included	Slightly Included	Included
------------------------	--------------------------------	---------------------------	----------------------	----------

## LABORATORY GROWN DIAMOND REPORT



July 4, 2024

IGI Report Number **LG641406043**

Description **LABORATORY GROWN DIAMOND**Shape and Cutting Style **ROUND BRILLIANT**

Measurements 6.59 - 6.63 X 4.07 MM

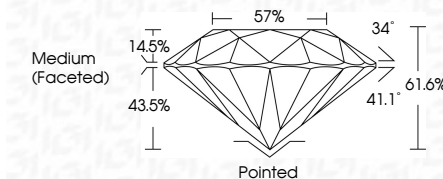
## GRADING RESULTS

Carat Weight 1.09 CARAT

Color Grade	E
-------------	---

Clarity Grade **VVS 2**

Cut Grade **IDEAL**



### ADDITIONAL GRADING INFORMATION

Polish **EXCELLENT**Symmetry **EXCELLENT**Fluorescence **NONE**Inscription(s)  LG641406043

Comments: This Laboratory Grown Diamond was created by Chemical Vapor Deposition (CVD) growth process.  
Type IIa



July 4, 2024	1.09 CARAT	WVS 2	Rated
GI Report No. LG41.40403	Color Weight	IDEAL	EXCELLENT
ROUND BRILLIANT	Color Grade	61.6%	EXCELLENT
	Clarity Grade	57%	NONE
	Cut Grade	Medium (Faceted)	gsl LG41.40403
	Depth		
	Table		
	Girdle		
	Culet		
	Booth		
	Symmetry		
	Fluorescence		
	Fluorescence(s)		
	Comments:		
	The Laboratory Given Diamond was		
	created by Chemical Vapor Deposition		
	(CVD) growth process.		
	Type IIa		