

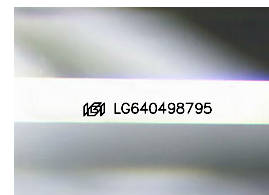
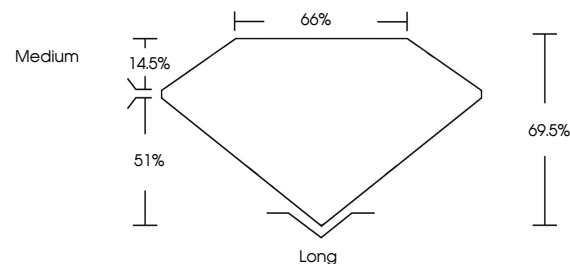


ELECTRONIC COPY

LABORATORY GROWN DIAMOND REPORT

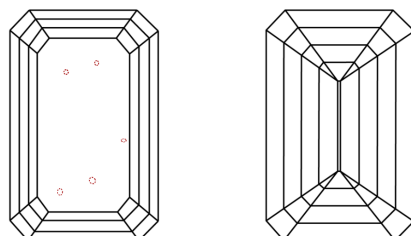
LG640498795
Report verification at igi.org

PROPORTIONS



Sample Image Used

CLARITY CHARACTERISTICS



KEY TO SYMBOLS

Red symbols indicate internal characteristics.
Green symbols indicate external characteristics.

COLOR

D E F G H I J Faint Very Light Light

CLARITY

IF	VVS ¹⁻²	VS ¹⁻²	SI ¹⁻²	I ¹⁻³
Internally Flawless	Very Very Slightly Included	Very Slightly Included	Slightly Included	Included

LABORATORY GROWN DIAMOND REPORT



June 27, 2024

IGI Report Number **LG640498795**

Description	LABORATORY GROWN DIAMOND
-------------	--------------------------

Shape and Cutting Style **EMERALD CUT**

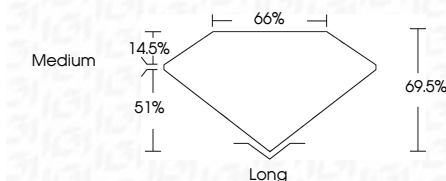
Measurements **8.54 X 5.97 X 4.15 MM**

GRADING RESULTS

Carat Weight **2.09 CARATS**

Color Grade	F
-------------	---

Clarity Grade VS 2



ADDITIONAL GRADING INFORMATION

Polish **EXCELLENT**Symmetry **EXCELLENT**Fluorescence **NONE**Inscription(s)  LG640498795

Comments: This Laboratory Grown Diamond was created by Chemical Vapor Deposition (CVD) growth process.
Type IIa



www.igi.org

© IGI 2020, International Gemological Institute

FD - 10 20



THIS DOCUMENT WAS PRODUCED WITH THE FOLLOWING SECURITY MEASURES: SPECIAL DOCUMENT PAPER, INK SCREENS, WATERMARK, BACKGROUND DESIGNS, HOLOGRAM AND OTHER SECURITY FEATURES NOT LISTED AND DO EXCEED DOCUMENT SECURITY INDUSTRY GUIDELINES

June 27, 2024
 IGI Report No LG640498795
 EMERALD CITT

3.54 X 5.97 X 4.15 MM	2.09 CARATS	V3 2	Long
Carat Weight		69.9%	EXCELLENT
Color Grade		66%	EXCELLENT
Clarity Grade		Medium	NONE
Depth			Fluorescence
Table			Symmetry
Grade			Polish
			Culet

Comments:
This Laboratory Grown Diamond was created by Chemical Vapor Deposition (CVD) growth process.