

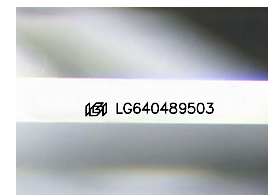
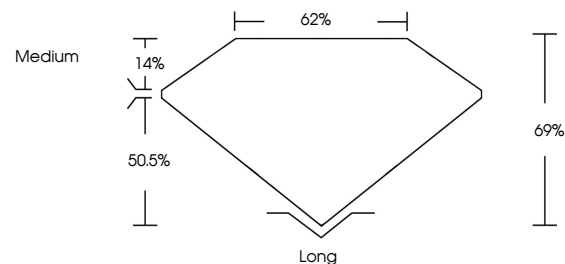


**ELECTRONIC COPY**

## LABORATORY GROWN DIAMOND REPORT

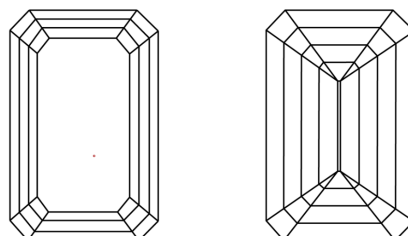
LG640489503  
Report verification at [igi.org](https://igi.org)

## PROPORTIONS



Sample Image Used

## CLARITY CHARACTERISTICS



## KEY TO SYMBOLS

Red symbols indicate internal characteristics.  
Green symbols indicate external characteristics.

## COLOR

D E F G H I J Faint Very Light Light

## CLARITY

IF	VVS <sup>1-2</sup>	VS <sup>1-2</sup>	SI <sup>1-2</sup>	I <sup>1-3</sup>
Internally Flawless	Very Very Slightly Included	Very Slightly Included	Slightly Included	Included

## LABORATORY GROWN DIAMOND REPORT



June 26, 2024

IGI Report Number **LG640489503**

Description **LABORATORY GROWN DIAMOND**

Shape and Cutting Style **EMERALD CUT**

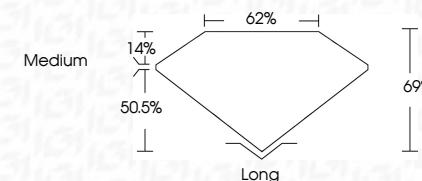
Measurements 7.58 X 5.55 X 3.83 MM

## GRADING RESULTS

Carat Weight **1.56 CARAT**

Color Grade	D
-------------	---

Clarity Grade VS 1



### ADDITIONAL GRADING INFORMATION

Polish **EXCELLENCE**Symmetry **EXCELLENCE**

Fluorescence NONI

Inscription(s)  LG64048950

Comments: This Laboratory Grown Diamond was created by Chemical Vapor Deposition (CVD) growth process.  
Type IIa



© IGI 2020, International Gemological Institute

FD - 10 20



THIS DOCUMENT WAS PRODUCED WITH THE FOLLOWING SECURITY MEASURES: SPECIAL DOCUMENT PAPER, INK SCREENS, WATERMARK, BACKGROUND DESIGNS, HOLOGRAM AND OTHER SECURITY FEATURES NOT LISTED AND DO EXCEED DOCUMENT SECURITY INDUSTRY GUIDELINES

**www.igi.org**

June 26, 2024  
GJ Report No. 16640489503

Report No. G640495903	1.56 CARAT	VS 1	Long
EXTRA PAD CUT	Color Grade	69%	EXCELLENT
5.59 X 5.55 X 3.83 MM	Clarity Grade	62%	EXCELLENT
Carat Weight	Depth		None
	Table		Color Grading
	Grade		
	Culet		
	Polish		
	Symmetry		
	Fluorescence		

**Comments:**  
This Laboratory Grown Diamond was created by Chemical Vapor Deposition (CVD) growth process.