

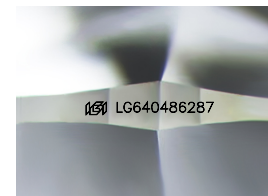
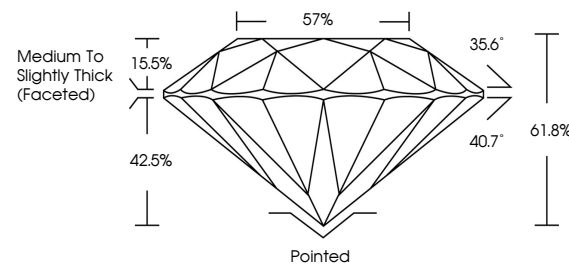


**ELECTRONIC COPY**

## LABORATORY GROWN DIAMOND REPORT

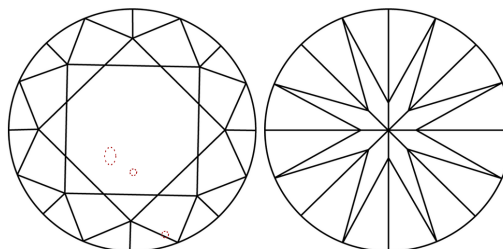
LG640486287  
Report verification at [igi.org](https://igi.org)

## PROPORTIONS



Sample Image Used

## CLARITY CHARACTERISTICS



## KEY TO SYMBOLS

Red symbols indicate internal characteristics.  
Green symbols indicate external characteristics.

## COLOR

D E F G H I J Faint Very Light Light

## CLARITY

IF      WS<sup>1-2</sup>      VS<sup>1-2</sup>      SI<sup>1-2</sup>      |<sup>1-3</sup>

Internally Flawless	Very Very Slightly Included	Very Slightly Included	Slightly Included	Included
------------------------	--------------------------------	---------------------------	----------------------	----------

## LABORATORY GROWN DIAMOND REPORT



June 27, 2024

IGI Report Number **LG640486287**Description **LABORATORY GROWN DIAMOND**Shape and Cutting Style **ROUND BRILLIANT**

Measurements 7.23 - 7.28 X 4.48 MM

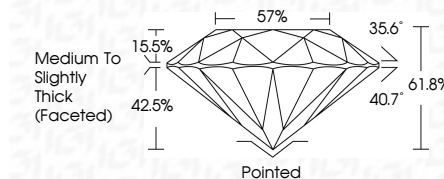
## GRADING RESULTS

Carat Weight 1.46 CARAT

Color Grade

Clarity Grade SI 1

Cut Grade **IDEAL**



### ADDITIONAL GRADING INFORMATION

Polish EXCELLENT

Symmetry **EXCELLENT**Fluorescence **NONE**Inscription(s)  LG640486287

Comments: This Laboratory Grown Diamond was created by Chemical Vapor Deposition (CVD) growth process.

Type IIa



June 27, 2024	Carat Weight	1.46 CARAT
SI Report No. IGS40486237	Color Grade	F
ROUND BRILLIANT	Clarity Grade	SI 1
	Depth	IDEAL
	Table	61.8%
23-23-7.28 X 4.48 MM	Medium To Slightly Thick (rounded)	57%
	Polish	Polished
	Symmetry	EXCELLENT
	Fluorescence	EXCELLENT
	Inscriptions(s)	NONE
		IGS IGS40486237
Comments:		
The Laboratory Grown Diamond was created by Chemical Vapor Deposition (CVD) growth process.		
Type IIA		