

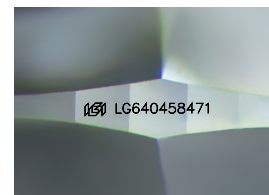
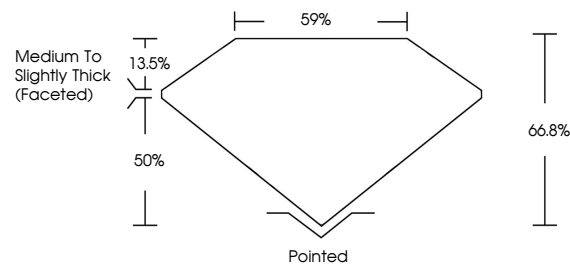


**ELECTRONIC COPY**

## LABORATORY GROWN DIAMOND REPORT

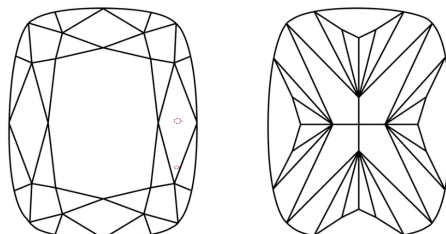
LG640458471  
Report verification at [igi.org](http://igi.org)

## PROPORTIONS



Sample Image Used

## CLARITY CHARACTERISTICS



### KEY TO SYMBOLS

Red symbols indicate internal characteristics.  
Green symbols indicate external characteristics.

## COLOR

D E F G H I J Faint Very Light Light

## CLARITY

IF	VVS <sup>1,2</sup>	VS <sup>1,2</sup>	SI <sup>1,2</sup>	I <sup>1,3</sup>
Internally Flawless	Very Very Slightly Included	Very Slightly Included	Slightly Included	Included

## LABORATORY GROWN DIAMOND REPORT



July 1, 2024	
IGI Report Number	LG640458471
Description	LABORATORY GROWN DIAMOND
Shape and Cutting Style	CUSHION BRILLIANT
Measurements	8.24 X 6.11 X 4.08 MM
<b>GRADING RESULTS</b>	
Carat Weight	1.58 CARAT
Color Grade	E
Clarity Grade	VS 2

### ADDITIONAL GRADING INFORMATION

Polish	EXCELLENT
Symmetry	EXCELLENT
Fluorescence	NONE
Inscription(s)	(15) LG64045847
<p>Comments: This Laboratory Grown Diamond was created by Chemical Vapor Deposition (CVD) growth process.</p> <p>Type IIa</p>	



IG



© IGI 2020, International Gemological Institute

FD - 10 20

**www.igi.org**

July 1, 2024  
GI Report No LG640458471  
CUSHION BRILLIANT

[illegible]

**Comments:**  
This Laboratory Grown Diamond was  
created by Chemical Vapor Deposition  
(CVD) growth process.