

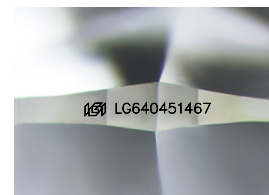
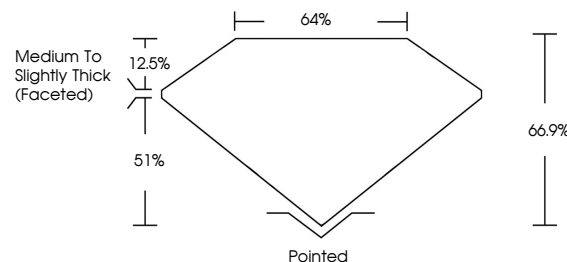


ELECTRONIC COPY

LABORATORY GROWN DIAMOND REPORT

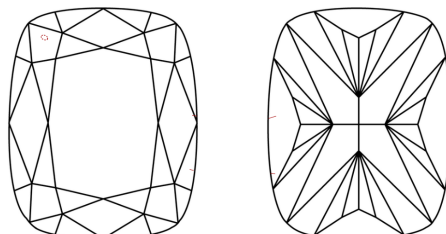
LG640451467
Report verification at lgi.org

PROPORTIONS



Sample Image Used

CLARITY CHARACTERISTICS



KEY TO SYMBOLS

Red symbols indicate internal characteristics.
Green symbols indicate external characteristics.

COLOR

D E F G H I J Faint Very Light Light

CLARITY

| IF | VVS ¹⁻² | VS ¹⁻² | SI ¹⁻² | I ¹⁻³ |
|---------------------|-----------------------------|------------------------|-------------------|------------------|
| Internally Flawless | Very Very Slightly Included | Very Slightly Included | Slightly Included | Included |

LABORATORY GROWN DIAMOND REPORT



June 28, 2024

IGI Report Number LG640451467

Description **LABORATORY GROWN DIAMOND**Shape and Cutting Style **CUSHION BRILLIANT**

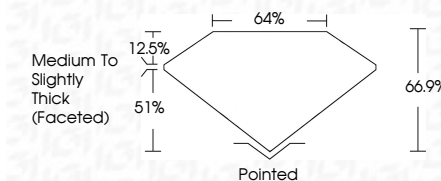
Measurements 9.13 X 6.56 X 4.39 MM

GRADING RESULTS

Carat Weight 2.09 CARATS

Color Grade

Clarity Grade VS 1



ADDITIONAL GRADING INFORMATION

Polish **EXCELLENT**Symmetry **EXCELLENT**Fluorescence **NONE**Inscription(s)  LG640451467

Comments: This Laboratory Grown Diamond was created by Chemical Vapor Deposition (CVD) growth process.
Type IIa



© IGI 2020, International Gemological Institute

FD - 10 20



THIS DOCUMENT WAS PRODUCED WITH THE FOLLOWING SECURITY MEASURES: SPECIAL DOCUMENT PAPER, INK SCREENS, WATERMARK, BACKGROUND DESIGNS, HOLOGRAM AND OTHER SECURITY FEATURES NOT LISTED AND DO EXCEED DOCUMENT SECURITY INDUSTRY GUIDELINE

www.igi.org

June 28, 2024
GI Report No LG640451467
CUSHION BRILLIANT

| | |
|--------------|------------------------------------|
| DIAMETER | 2.09 CARATS |
| DEPTH | VS 1 |
| TABLE | 66.9% |
| GRADE | 64% |
| CLARITY | Medium To Slightly Thick (Faceted) |
| COLOR | Pointed |
| CUT | EXCELLENT |
| POLISH | EXCELLENT |
| SYMMETRY | NONE |
| FLUORESCENCE | |

Comments:
This Laboratory Grown Diamond was
created by Chemical Vapor Deposition
(CVD) growth process.