

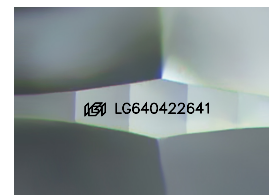
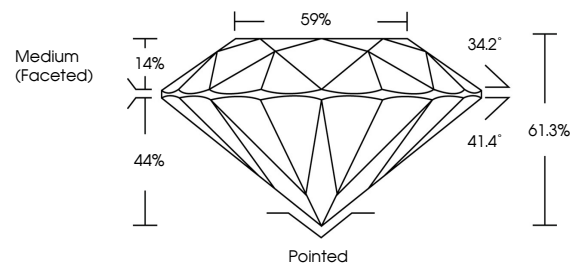


**ELECTRONIC COPY**

## LABORATORY GROWN DIAMOND REPORT

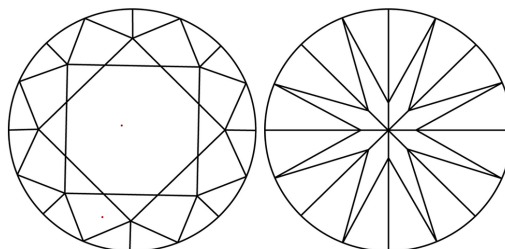
LG640422641  
Report verification at [lgi.org](https://lgi.org)

## PROPORTIONS



Sample Image Used

## CLARITY CHARACTERISTICS



### KEY TO SYMBOLS

Red symbols indicate internal characteristics.  
Green symbols indicate external characteristics.

## COLOR

D E F G H I J Faint Very Light Light

## CLARITY

IF	VVS <sup>1-2</sup>	VS <sup>1-2</sup>	SI <sup>1-2</sup>	I <sup>1-3</sup>
Internally Flawless	Very Very Slightly Included	Very Slightly Included	Slightly Included	Included

## LABORATORY GROWN DIAMOND REPORT



June 28, 2024

IGI Report Number **LG640422641**Description **LABORATORY GROWN DIAMOND**Shape and Cutting Style **ROUND BRILLIANT**

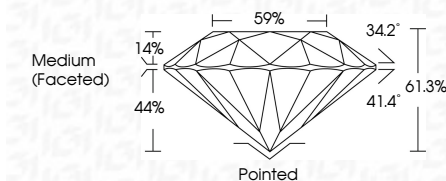
Measurements 6.61 - 6.63 X 4.06 MM

## GRADING RESULTS

Carat Weight 1.08 CARAT

Color Grade EClarity Grade **VS 2**

Cut Grade **IDEAL**



### ADDITIONAL GRADING INFORMATION

Polish **EXCELLENT**Symmetry **EXCELLENT**Fluorescence **NONE**Inscription(s)  LG640422641

Comments: This Laboratory Grown Diamond was created by Chemical Vapor Deposition (CVD) growth process.  
Type IIa



June 28, 2024	Report No: US64022641	1.08 CARAT	VVS 2	Pointed	Comments: This Laboratory Grown Diamond was created by Chemical Vapor Deposition (CVD) growth process. Type IIA
ROUND BRILLIANT			IDEAL	EXCELLENT	
			61.3%	EXCELLENT	
			89%	NONE	
			Medium (Faceted)	#61US64022641	
	4.61 - 4.63 X 4.01 MM				
	Color Grade	Clarity Grade	Cut Grade	Culet	Comments: This Laboratory Grown Diamond was created by Chemical Vapor Deposition (CVD) growth process. Type IIA
			Depth	Polish	
			Table	Symmetry	
			Girdle	Fluorescence	
				Fluorescence(s)	