

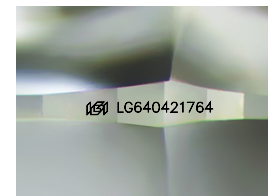
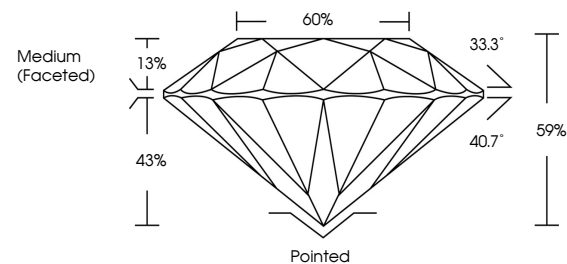


**ELECTRONIC COPY**

## LABORATORY GROWN DIAMOND REPORT

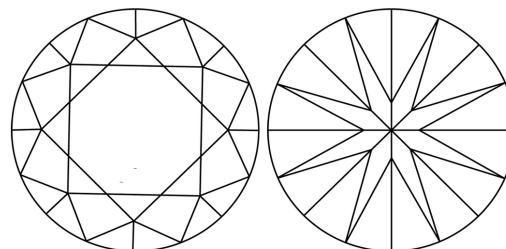
LG640421764  
Report verification at [igi.org](https://igi.org)

## PROPORTIONS



Sample Image Used

## CLARITY CHARACTERISTICS



## KEY TO SYMBOLS

Red symbols indicate internal characteristics.  
Green symbols indicate external characteristics.

## COLOR

D E F G H I J Faint Very Light Light

## CLARITY

IF      WS<sup>1-2</sup>      VS<sup>1-2</sup>      SI<sup>1-2</sup>      I<sup>1-3</sup>

|                        |                                |                           |                      |          |
|------------------------|--------------------------------|---------------------------|----------------------|----------|
| Internally<br>Flawless | Very Very<br>Slightly Included | Very<br>Slightly Included | Slightly<br>Included | Included |
|------------------------|--------------------------------|---------------------------|----------------------|----------|

## LABORATORY GROWN DIAMOND REPORT



June 26, 2024

IGI Report Number **LG640421764**

|             |                          |
|-------------|--------------------------|
| Description | LABORATORY GROWN DIAMOND |
|-------------|--------------------------|

Shape and Cutting Style **ROUND BRILLIANT**

Measurements 6.71 - 6.72 X 3.96 MM

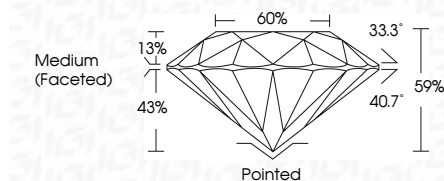
## GRADING RESULTS

Carat Weight 1.09 CARAT

Color Grade E

Clarity Grade **VS 2**

Cut Grade **IDEAL**



### ADDITIONAL GRADING INFORMATION

Polish **EXCELLENT**Symmetry **EXCELLENT**Fluorescence **NONE**Inscription(s)  LG640421764

Comments: This Laboratory Grown Diamond was created by Chemical Vapor Deposition (CVD) growth process.  
Type IIa



© IGI 2020, International Gemological Institute

FD - 10 20

**www.igi.org**

THIS DOCUMENT WAS PRODUCED WITH THE FOLLOWING SECURITY MEASURES: SPECIAL DOCUMENT PAPER, INK SCREENS, WATERMARK BACKGROUND DESIGNS, HOLOGRAM AND OTHER SECURITY FEATURES NOT LISTED AND DO EXCEED DOCUMENT SECURITY INDUSTRY GUIDELINES

June 26, 2024  
GI Report No LG640421764  
ROUND BRILLIANT

|                    |                    |
|--------------------|--------------------|
| 1.09 CARAT         | 1.09 CARAT         |
| E                  | E                  |
| VVS 2              | VVS 2              |
| IDEAL              | IDEAL              |
| 59%                | 59%                |
| 60%                | 60%                |
| Medium (Excellent) | Medium (Excellent) |

|              | Pointed | EXCELLENT | EXCELLENT | NONE |
|--------------|---------|-----------|-----------|------|
| Culet        |         |           |           |      |
| Polish       |         |           |           |      |
| Symmetry     |         |           |           |      |
| Fluorescence |         |           |           |      |

**Comments:**  
This Laboratory Grown Diamond was created by Chemical Vapor Deposition (CVD) growth process.