

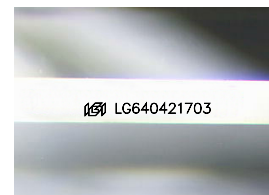
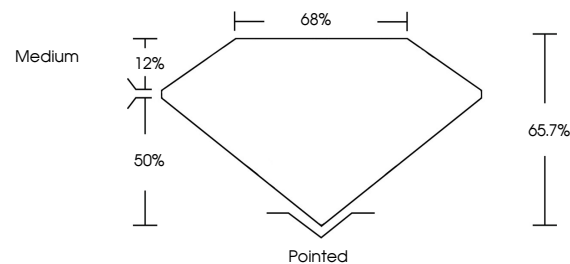


ELECTRONIC COPY

LABORATORY GROWN DIAMOND REPORT

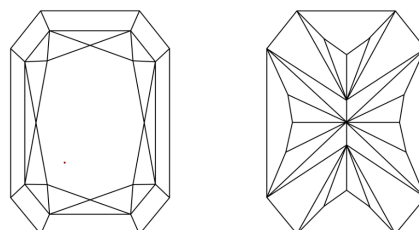
LG640421703
Report verification at igi.org

PROPORTIONS



Sample Image Used

CLARITY CHARACTERISTICS



KEY TO SYMBOLS

Red symbols indicate internal characteristics.
Green symbols indicate external characteristics.

COLOR

D E F G H I J Faint Very Light Light

CLARITY

IF	VVS ¹⁻²	VS ¹⁻²	SI ¹⁻²	I ¹⁻³
Internally Flawless	Very Very Slightly Included	Very Slightly Included	Slightly Included	Included

LABORATORY GROWN DIAMOND REPORT



June 26, 2024

IGI Report Number **LG640421703**

Description	LABORATORY GROWN DIAMOND
-------------	--------------------------

Shape and Cutting Style

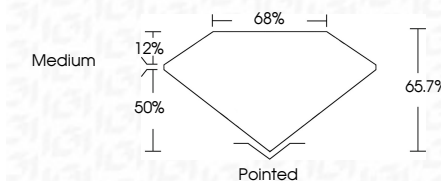
CUT CORNERED
RECTANGULAR MODIFIED
BRILLIANT

Measurements **9.03 X 6.16 X 4.05 MM**

GRADING RESULTS

Carat Weight **1.98 CARAT**

Color Grade	D
-------------	---

Clarity Grade VVS 2

ADDITIONAL GRADING INFORMATION

Polish **EXCELLENT**Symmetry **EXCELLENT**Fluorescence **NONE**Inscription(s) LG640421703

Comments: This Laboratory Grown Diamond was created by Chemical Vapor Deposition (CVD) growth process.
Type IIa



© IGI 2020, International Gemological Institute

FD - 10 20

www.igi.org

THIS DOCUMENT WAS PRODUCED WITH THE FOLLOWING SECURITY MEASURES: SPECIAL DOCUMENT PAPER, INK SCREENS, WATERMARK BACKGROUND DESIGNS, HOLOGRAM AND OTHER SECURITY FEATURES NOT LISTED AND DO EXCEED DOCUMENT SECURITY INDUSTRY GUIDELINES

June 26, 2024	GL Report No 10
GI CUT CORNERED	
0.03 X 6.16 X 4.4	
Carat Weight	
Color Grade	
Clarity Grade	
Depth	
Table	
Girdle	
Culet	
Polish	
Symmetry	
Fluorescence	
Inscription(s)	
Comments:	
This Laboratory is not responsible for the results of any tests created by the client. This is a preliminary report. The CVD growth process is a type IIa	