



ELECTRONIC COPY

LG640417402
Report verification at igi.org



June 25, 2024

IGI Report Number **LG640417402**

Description **LABORATORY GROWN DIAMOND**

Shape and Cutting Style **CUT CORNERED
RECTANGULAR MODIFIED
BRILLIANT**

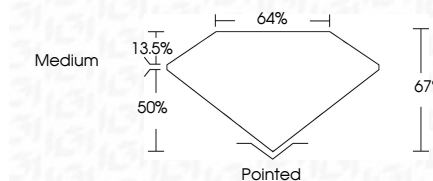
Measurements **9.96 X 6.87 X 4.60 MM**

GRADING RESULTS

Carat Weight **2.73 CARATS**

Color Grade **D**

Clarity Grade **VS 1**



ADDITIONAL GRADING INFORMATION

Polish **EXCELLENT**

Symmetry **EXCELLENT**

Fluorescence **NONE**

Inscription(s) **IGI LG640417402**

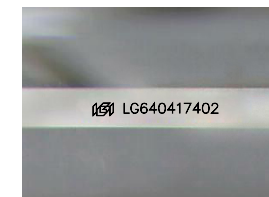
Comments: This Laboratory Grown Diamond was created by Chemical Vapor Deposition (CVD) growth process. Type IIa



IGI

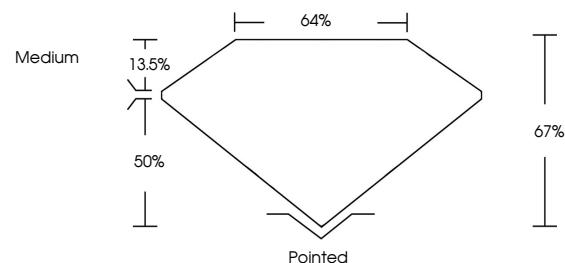
June 25, 2024
IGI Report No. LG640417402
CUT CORNERED RECT. MODIFIED BRILLIANT
9.96 X 6.87 X 4.60 MM
2.73 CARATS
D
Color Grade
VS 1
Depth 67%
Table 13.5%
Girdle
Medium
Pointed
EXCELLENT
EXCELLENT
NONE
IGI LG640417402

Comments: This Laboratory Grown Diamond was created by Chemical Vapor Deposition (CVD) growth process. Type IIa

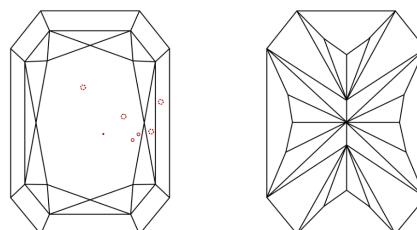


Sample Image Used

PROPORTIONS



CLARITY CHARACTERISTICS



KEY TO SYMBOLS

Red symbols indicate internal characteristics.
Green symbols indicate external characteristics.

COLOR

D E F G H I J Faint Very Light Light

CLARITY

IF VS¹⁻² VS¹⁻² SI¹⁻² I¹⁻³

Internally Flawless Very Very Slightly Included Very Slightly Included Slightly Included Included

