

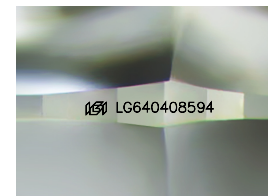
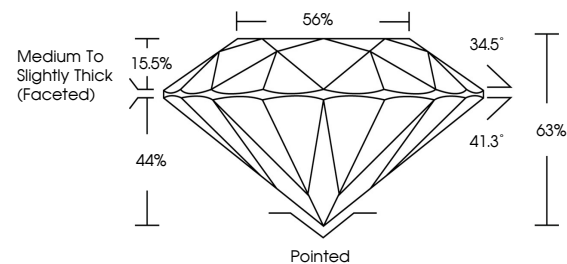


ELECTRONIC COPY

LABORATORY GROWN DIAMOND REPORT

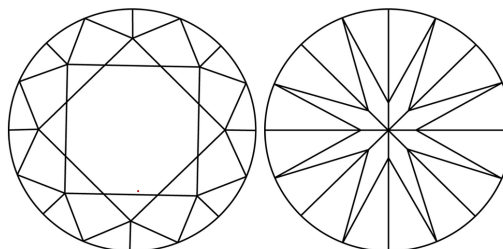
LG640408594
Report verification at igi.org

PROPORTIONS



Sample Image Used

CLARITY CHARACTERISTICS



KEY TO SYMBOLS

Red symbols indicate internal characteristics.
Green symbols indicate external characteristics.

COLOR

D E F G H I J Faint Very Light Light

CLARITY

IF WS¹⁻² VS¹⁻² S¹⁻² |¹⁻³

Internally Flawless	Very Very Slightly Included	Very Slightly Included	Slightly Included	Included
------------------------	--------------------------------	---------------------------	----------------------	----------

LABORATORY GROWN DIAMOND REPORT



June 24, 2024

IGI Report Number LG640408594

Description	LABORATORY GROWN DIAMOND
-------------	--------------------------

Shape and Cutting Style **ROUND BRILLIANT**

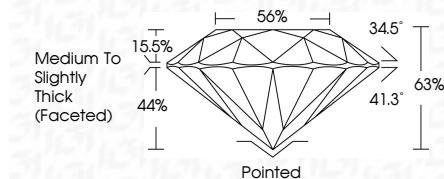
Measurements 6.53 - 6.56 X 4.12 MM

GRADING RESULTS

Carat Weight 1.08 CARAT

Color Grade **E**Clarity Grade WS 2

Cut Grade **EXCELLENT**



ADDITIONAL GRADING INFORMATION

Polish **EXCELLENT**Symmetry **EXCELLENT**

Fluorescence NON

Inscription(s)  LG640408594

Comments: This Laboratory Grown Diamond was created by Chemical Vapor Deposition (CVD) growth process.
Type IIa



© IGI 2020, International Gemological Institute

FD - 10 20

www.igi.org

THIS DOCUMENT WAS PRODUCED WITH THE FOLLOWING SECURITY MEASURES: SPECIAL DOCUMENT PAPER, INK SCREENS, WATERMARK, BACKGROUND DESIGNS, HOLOGRAM AND OTHER SECURITY FEATURES NOT LISTED AND DO EXCEED DOCUMENT SECURITY INDUSTRY GUIDELINE

June 24, 2024
GI Report No LG640408594
ROUND BRILLIANT

6.58 - 6.55 X 4.12 MM	1.08 CARAT
Carat Weight	E
Color Grade	VVS 2
Clarity Grade	EXCELLENT
Cut Grade	65%
Depth	56%
Table	Medium To Slightly Thick (Faceted)
Grade	
Culet	Pointed
Polish	EXCELLENT
Symmetry	EXCELLENT
Fluorescence	NONE

Comments:
This Laboratory Grown Diamond was
created by Chemical Vapor Deposition
(CVD) growth process.