



ELECTRONIC COPY

LG640403921
Report verification at igi.org



June 26, 2024

IGI Report Number **LG640403921**

Description **LABORATORY GROWN DIAMOND**

Shape and Cutting Style **CUSHION BRILLIANT**

Measurements **9.06 X 6.56 X 4.35 MM**

GRADING RESULTS

Carat Weight **2.03 CARATS**

Color Grade **F**

Clarity Grade **VVS 2**

June 26, 2024
IGI Report Number **LG640403921**
Description **LABORATORY GROWN DIAMOND**
Shape and Cutting Style **CUSHION BRILLIANT**
Measurements **9.06 X 6.56 X 4.35 MM**

GRADING RESULTS

Carat Weight **2.03 CARATS**

Color Grade **F**

Clarity Grade **VVS 2**

ADDITIONAL GRADING INFORMATION

Polish **EXCELLENT**

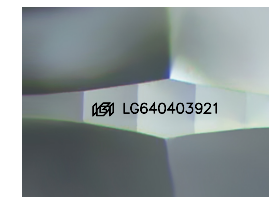
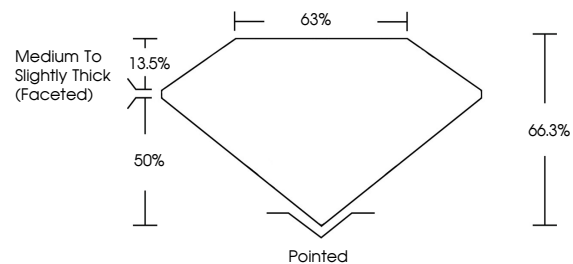
Symmetry **EXCELLENT**

Fluorescence **NONE**

Inscription(s) **IGI LG640403921**

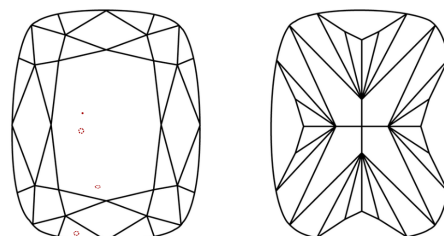
Comments: This Laboratory Grown Diamond was created by Chemical Vapor Deposition (CVD) growth process.
Type IIa

PROPORTIONS



Sample Image Used

CLARITY CHARACTERISTICS



KEY TO SYMBOLS

Red symbols indicate internal characteristics.
Green symbols indicate external characteristics.

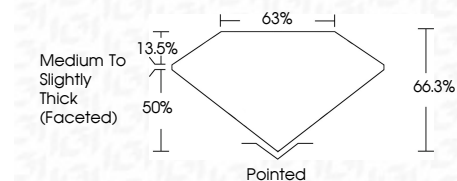
COLOR

D E F G H I J Faint Very Light Light

CLARITY

IF VS¹⁻² VS¹⁻² SI¹⁻² I¹⁻³

Internally Flawless Very Very Slightly Included Very Slightly Included Slightly Included Included



ADDITIONAL GRADING INFORMATION

Polish **EXCELLENT**

Symmetry **EXCELLENT**

Fluorescence **NONE**

Inscription(s) **IGI LG640403921**

Comments: This Laboratory Grown Diamond was created by Chemical Vapor Deposition (CVD) growth process.
Type IIa



IGI



June 26, 2024
IGI Report No LG640403921
CUSHION BRILLIANT
9.06 X 6.56 X 4.35 MM
2.03 CARATS
F
Color Grade
VVS 2
Clarity Grade
66.3%
50%
Depth
63%
Table
Medium to Slightly Thick (Faceted)
Pointed
Culet
EXCELLENT
Polish
EXCELLENT
Symmetry
EXCELLENT
Fluorescence
NONE
Inscription(s)
IGI LG640403921
Comments: This Laboratory Grown Diamond was created by Chemical Vapor Deposition (CVD) growth process.
Type IIa