

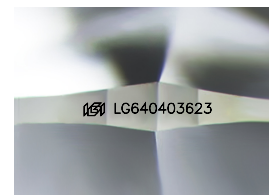
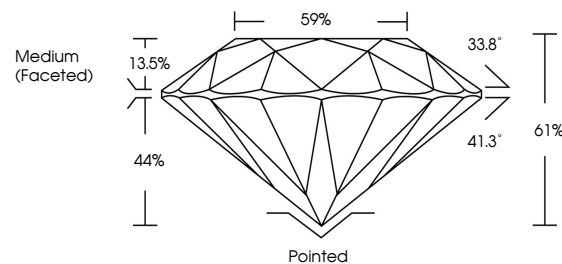


**ELECTRONIC COPY**

## LABORATORY GROWN DIAMOND REPORT

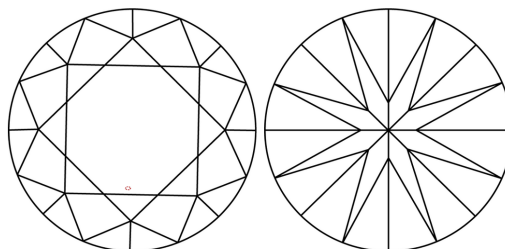
LG640403623  
Report verification at [lgi.org](https://lgi.org)

## PROPORTIONS



Sample Image Used

## CLARITY CHARACTERISTICS



## KEY TO SYMBOLS

Red symbols indicate internal characteristics.  
Green symbols indicate external characteristics.

**COLOR**

D E F G H I J Faint Very Light Light

## CLARITY

IF      WS<sup>1-2</sup>      VS<sup>1-2</sup>      SI<sup>1-2</sup>      |<sup>1-3</sup>

Internally Flawless	Very Very Slightly Included	Very Slightly Included	Slightly Included	Included
------------------------	--------------------------------	---------------------------	----------------------	----------

## LABORATORY GROWN DIAMOND REPORT



June 24, 2024

IGI Report Number **LG640403623**Description **LABORATORY GROWN DIAMOND**Shape and Cutting Style **ROUND BRILLIANT**

Measurements 6.57 - 6.61 X 4.02 MM

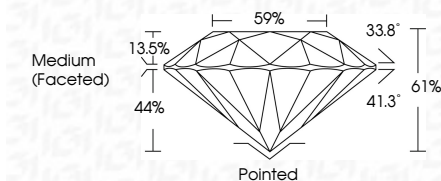
## GRADING RESULTS

Carat Weight 1.06 CARAT

Color Grade

Clarity Grade WS 2

Cut Grade **IDEAL**



### ADDITIONAL GRADING INFORMATION

Polish **EXCELLENT**Symmetry **EXCELLENT**Fluorescence **NONE**Inscription(s)  LG640403623

Comments: This Laboratory Grown Diamond was created by Chemical Vapor Deposition (CVD) growth process.

Type IIa



	June 24, 2024	GJ Report No LG4040623
SOUND BRILLIANT	4.57 - 4.61 X 4.02 MM	1.06 CARAT
	Color Weight	E
	Color Grade	VVS 2
	Clarity Grade	IDEAL
	Cut Grade	61%
	Depth	89%
	Table	
	Girdle	Medium (Faceted)
	Culet	Patched
	Polish	EXCELLENT
	Symmetry	EXCELLENT
	Fluorescence	NONE
	Inscription(s)	#89LGG4040623
	Comments:	This Laboratory Grown Diamond was created by Chemical Vapor Deposition (CVD) growth process. Type IIa

