



ELECTRONIC COPY

LG639488160
Report verification at igi.org



June 15, 2024

IGI Report Number **LG639488160**

Description **LABORATORY GROWN DIAMOND**

Shape and Cutting Style **ROUND BRILLIANT**

Measurements **8.24 - 8.27 X 5.00 MM**

GRADING RESULTS

Carat Weight **2.10 CARATS**

Color Grade **H**

Clarity Grade **VVS 2**

Cut Grade **IDEAL**

June 15, 2024
IGI Report Number **LG639488160**
Description **LABORATORY GROWN DIAMOND**
Shape and Cutting Style **ROUND BRILLIANT**
Measurements **8.24 - 8.27 X 5.00 MM**

GRADING RESULTS

Carat Weight **2.10 CARATS**

Color Grade **H**

Clarity Grade **VVS 2**

Cut Grade **IDEAL**

ADDITIONAL GRADING INFORMATION

Polish **EXCELLENT**

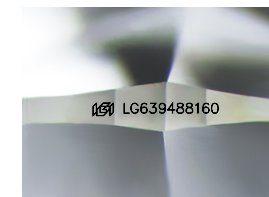
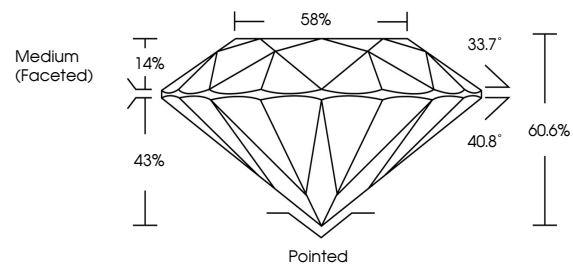
Symmetry **EXCELLENT**

Fluorescence **NONE**

Inscription(s) **LG639488160**

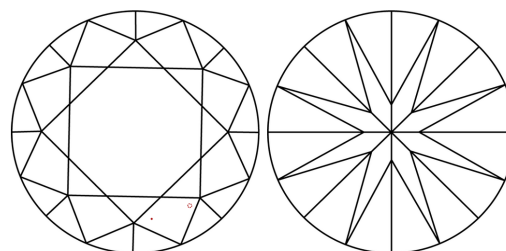
Comments: This Laboratory Grown Diamond was created by Chemical Vapor Deposition (CVD) growth process.
Type IIa

PROPORTIONS



Sample Image Used

CLARITY CHARACTERISTICS



KEY TO SYMBOLS

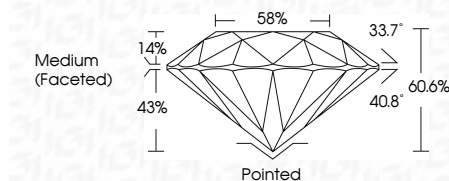
Red symbols indicate internal characteristics.
Green symbols indicate external characteristics.

COLOR

D E F G H I J Faint Very Light Light

CLARITY

IF	VVS ¹⁻²	VS ¹⁻²	SI ¹⁻²	I ¹⁻³
Internally Flawless	Very Very Slightly Included	Very Slightly Included	Slightly Included	Included



ADDITIONAL GRADING INFORMATION

Polish **EXCELLENT**

Symmetry **EXCELLENT**

Fluorescence **NONE**

Inscription(s) **LG639488160**

Comments: This Laboratory Grown Diamond was created by Chemical Vapor Deposition (CVD) growth process.
Type IIa



IGI



June 15, 2024	IGI Report No LG639488160	2.10 CARATS	H	Pointed
8.24 - 8.27 X 5.00 MM	ROUND BRILLIANT	2.10 CARATS	VVS 2	EXCELLENT
Carat Weight		2.10 CARATS	IDEAL	EXCELLENT
Color Grade		2.10 CARATS	60.6%	NONE
Clarity Grade		2.10 CARATS	58%	NONE
Depth		2.10 CARATS	Medium (Faceted)	None
Table		2.10 CARATS		None
Girdle		2.10 CARATS		None
Culet		2.10 CARATS		None
Polish		2.10 CARATS		None
Symmetry		2.10 CARATS		None
Fluorescence		2.10 CARATS		None
Inscription(s)		2.10 CARATS		None

Comments: This Laboratory Grown Diamond was created by Chemical Vapor Deposition (CVD) growth process.
Type IIa