

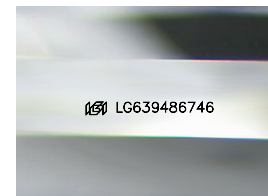
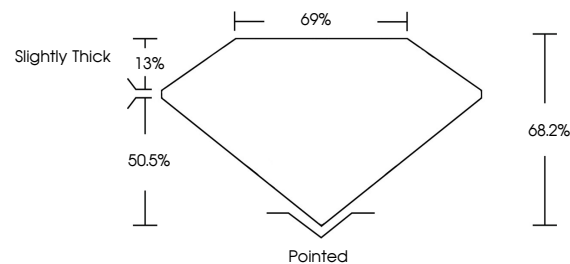


**ELECTRONIC COPY**

## LABORATORY GROWN DIAMOND REPORT

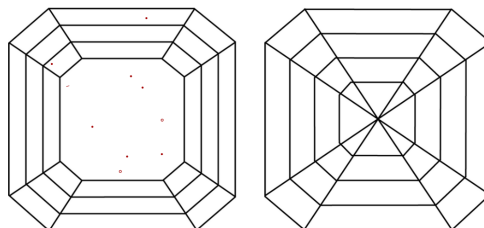
LG639486746  
Report verification at [igi.org](https://igi.org)

## PROPORTIONS



Sample Image Used

## CLARITY CHARACTERISTICS



## KEY TO SYMBOLS

Red symbols indicate internal characteristics.  
Green symbols indicate external characteristics.

## COLOR

D E F G H I J Faint Very Light Light

## CLARITY

IF	VVS <sup>1,2</sup>	VS <sup>1,2</sup>	SI <sup>1,2</sup>	I <sup>1,3</sup>
Internally Flawless	Very Very Slightly Included	Very Slightly Included	Slightly Included	Included

## LABORATORY GROWN DIAMOND REPORT



June 15, 2024

IGI Report Number **LG639486746**

Description	LABORATORY GROWN DIAMOND
-------------	--------------------------

Shape and Cutting Style **SQUARE EMERALD CUT**

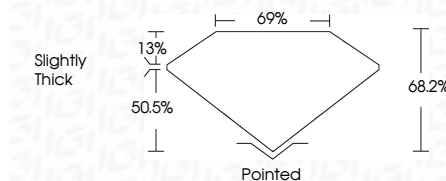
Measurements 8.82 X 8.55 X 5.83 MM

## GRADING RESULTS

Carat Weight **4.03 CARATS**

Color Grade G

Clarity Grade VS 1



### ADDITIONAL GRADING INFORMATION

Polish **EXCELLENT**Symmetry **EXCELLENT**Fluorescence **NONE**Inscription(s)  LG639486746

Comments: This Laboratory Grown Diamond was created by Chemical Vapor Deposition (CVD) growth process.  
Type IIa



**www.igi.org**

© IGI 2020, International Gemological Institute

FD - 10 20



THIS DOCUMENT WAS PRODUCED WITH THE FOLLOWING SECURITY MEASURES: SPECIAL DOCUMENT PAPER, INK SCREENS, WATERMARK, BACKGROUND DESIGNS, HOLOGRAM AND OTHER SECURITY FEATURES NOT LISTED AND DO EXCEED DOCUMENT SECURITY INDUSTRY GUIDELINE

June 15, 2024	Q Report No. LG39486746	4.03 CARATS	G	VS 1	68.2%	69%	Slightly Thick	Pointed	EXCELLENT	EXCELLENT	NONE	1691 LG39486746
SQUARE EMERALD CUT	Color Weight	Color Grade	Clarity Grade	Depth	Table	Grade		Culet	Polish	Symmetry	Fluorescence	Inscriptions(s)
	0.82 X 0.55 X 0.53 MM											

Comments:

This Laboratory Grown Diamond was created using the Chemical Vapor Deposition (CVD) growth process.

Type IIG

**Comments:**  
This Laboratory Grown Diamond was created by Chemical Vapor Deposition (CVD) growth process.