

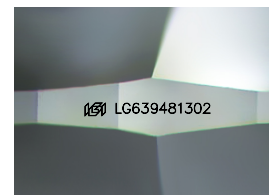
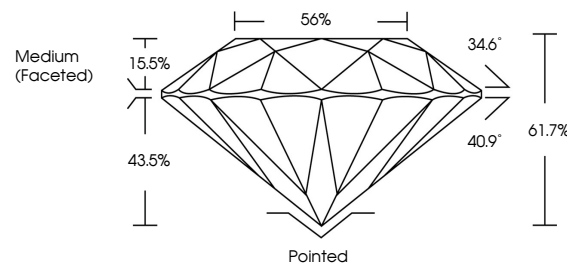


ELECTRONIC COPY

LABORATORY GROWN DIAMOND REPORT

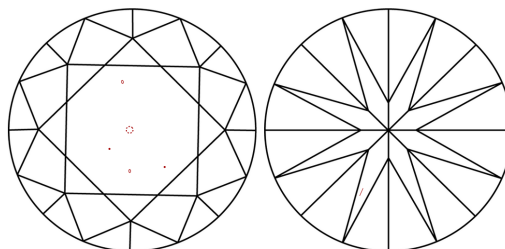
LG639481302
Report verification at lgi.org

PROPORTIONS



Sample Image Used

CLARITY CHARACTERISTICS



KEY TO SYMBOLS

Red symbols indicate internal characteristics.
Green symbols indicate external characteristics.

COLOR

D E F G H I J Faint Very Light Light

CLARITY

IF WS¹⁻² VS¹⁻² SI¹⁻² I¹⁻³

Internally Flawless	Very Very Slightly Included	Very Slightly Included	Slightly Included	Included
------------------------	--------------------------------	---------------------------	----------------------	----------

LABORATORY GROWN DIAMOND REPORT



June 17, 2024

IGI Report Number **LG639481302**

Description	LABORATORY GROWN DIAMOND
-------------	--------------------------

Shape and Cutting Style **ROUND BRILLIANT**

Measurements 9.30 - 9.38 X 5.77 MM

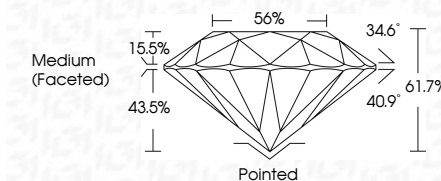
GRADING RESULTS

Carat Weight **3.08 CARATS**

Color Grade **G**

Clarity Grade VS 1

Cut Grade **IDEAL**



ADDITIONAL GRADING INFORMATION

Polish **EXCELLENT**Symmetry **EXCELLENT**Fluorescence **NONE**Inscription(s) LG639481302

Comments: This Laboratory Grown Diamond was created by Chemical Vapor Deposition (CVD) growth process.

Type IIa



June 19, 2024	G1 Report No. LG539481302	ROUND BRILLIANT	3.08 CARATS	G	VS 1	IDEAL	61.7%	56%	Medium (Faceted)	Pointed	Excellent	EXCELLENT	NONE	#61 LG539481302	Comments: Created by Crown Diamond usa Initiated by Crown Diamond usa CVD growth process. Type IIG
				Carat Weight	Color Grade	Clarity Grade	Car Grade	Depth	Table	Girdle	Culet	Polish	Symmetry	Fluorescence	Inscriptions(s)



THIS DOCUMENT WAS PRODUCED WITH THE FOLLOWING SECURITY MEASURES: SPECIAL DOCUMENT PAPER, INK SCREENS, WATERMARK, BACKGROUND DESIGNS, HOLOGRAM AND OTHER SECURITY FEATURES NOT LISTED AND DO EXCEED DOCUMENT SECURITY INDUSTRY GUIDELINE