

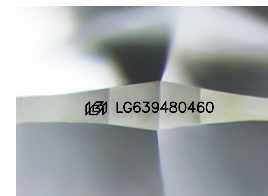
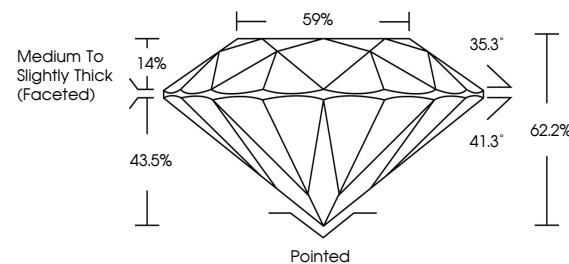


**ELECTRONIC COPY**

## LABORATORY GROWN DIAMOND REPORT

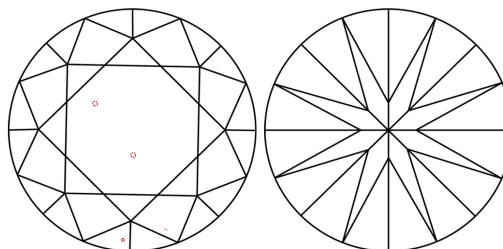
LG639480460  
Report verification at [igi.org](https://igi.org)

## PROPORTIONS



Sample Image Used

## CLARITY CHARACTERISTICS



## KEY TO SYMBOLS

Red symbols indicate internal characteristics.  
Green symbols indicate external characteristics.

## COLOR

D E F G H I J Faint Very Light Light

## CLARITY

IF	VVS <sup>1,2</sup>	VS <sup>1,2</sup>	SI <sup>1,2</sup>	I <sup>1,3</sup>
Internally Flawless	Very Very Slightly Included	Very Slightly Included	Slightly Included	Included

## LABORATORY GROWN DIAMOND REPORT



June 14, 2024

IGI Report Number **LG639480460**Description **LABORATORY GROWN DIAMOND**Shape and Cutting Style **ROUND BRILLIANT**

Measurements 7.22 - 7.23 X 4.50 MM

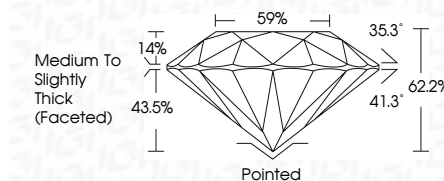
## GRADING RESULTS

Carat Weight 1.47 CARAT

Color Grade **E**

Clarity Grade VS 1

Cut Grade **EXCELLENT**



### ADDITIONAL GRADING INFORMATION

Polish **EXCELLENT**Symmetry **EXCELLENT**Fluorescence **NONE**Inscription(s)  LG639480460

Comments: This Laboratory Grown Diamond was created by Chemical Vapor Deposition (CVD) growth process.  
Type IIa



© IGI 2020, International Gemmological Institute

FD - 10 20



THIS DOCUMENT WAS PRODUCED WITH THE FOLLOWING SECURITY MEASURES: SPECIAL DOCUMENT PAPER, INK SCREENS, WATERMARK, BACKGROUND DESIGNS, HOLOGRAM AND OTHER SECURITY FEATURES NOT LISTED AND DO EXCEED DOCUMENT SECURITY INDUSTRY GUIDELINE

**www.igi.org**

June 14, 2024	GL Report No. LG35948040	1.47 CARAT	VSI	Pointed	Comments: The laboratory Grown Diamond was found to be a natural Vapor Deposition (VD) grown process. Type IIA
ROUND BRILLIANT		EXCELLENT	62.2%	EXCELLENT	
			59%	EXCELLENT	
			Medium to Slightly Thick (Focalized)	NONE	
				lg3 LG35948040	
	Carat Weight	Color Grade	Clarity Grade	Culet	Fluorescence Inscriptions(s)
			Color Grade	Polish	
			Depth	Symmetry	
			Table		
			Girdle		