

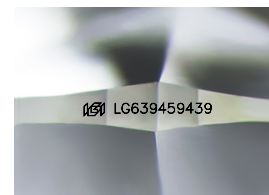
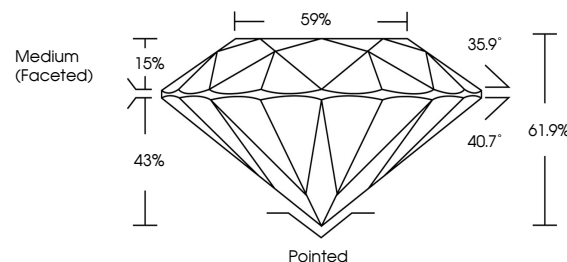


ELECTRONIC COPY

LABORATORY GROWN DIAMOND REPORT

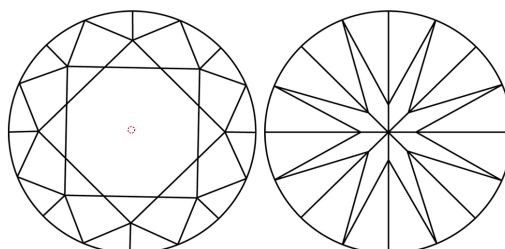
LG639459439
Report verification at lgi.org

PROPORTIONS



Sample Image Used

CLARITY CHARACTERISTICS



KEY TO SYMBOLS

Red symbols indicate internal characteristics.
Green symbols indicate external characteristics.

COLOR

D E F G H I J Faint Very Light Light

CLARITY

| IF | VVS ^{1,2} | VS ^{1,2} | SI ^{1,2} | I ^{1,3} |
|---------------------|-----------------------------|------------------------|-------------------|------------------|
| Internally Flawless | Very Very Slightly Included | Very Slightly Included | Slightly Included | Included |

LABORATORY GROWN DIAMOND REPORT



June 19, 2024

IGI Report Number **LG639459439**

| | |
|-------------|--------------------------|
| Description | LABORATORY GROWN DIAMOND |
|-------------|--------------------------|

Shape and Cutting Style **ROUND BRILLIANT**

Measurements 9.26 - 9.29 X 5.74 MM

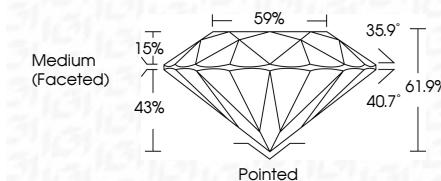
GRADING RESULTS

Carat Weight **3.07 CARATS**

Color Grade H

Clarity Grade **VVS 2**

Cut Grade **IDEAL**



ADDITIONAL GRADING INFORMATION

Polish **EXCELLENT**Symmetry **EXCELLENT**Fluorescence **NONE**Inscription(s) LG639459439

Comments: This Laboratory Grown Diamond was created by Chemical Vapor Deposition (CVD) growth process.

Type IIa

[illegible]