

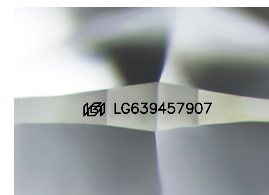
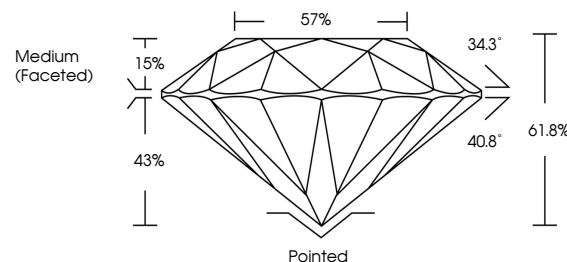


ELECTRONIC COPY

LABORATORY GROWN DIAMOND REPORT

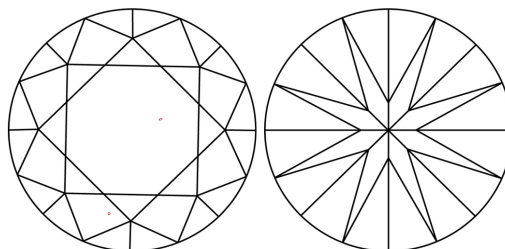
LG639457907
Report verification at lgi.org

PROPORTIONS



Sample Image Used

CLARITY CHARACTERISTICS



KEY TO SYMBOLS

Red symbols indicate internal characteristics.
Green symbols indicate external characteristics.

COLOR

D E F G H I J Faint Very Light Light

CLARITY

IF	VVS ^{1,2}	VS ^{1,2}	SI ^{1,2}	I ^{1,3}
Internally Flawless	Very Very Slightly Included	Very Slightly Included	Slightly Included	Included

LABORATORY GROWN DIAMOND REPORT



June 22, 2024

IGI Report Number **LG639457907**

Description	LABORATORY GROWN DIAMOND
-------------	--------------------------

Shape and Cutting Style **ROUND BRILLIANT**

Measurements 6.55 - 6.60 X 4.06 MM

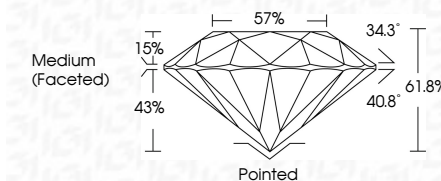
GRADING RESULTS

Carat Weight 1.08 CARAT

Color Grade

Clarity Grade VS 1

Cut Grade **IDEAL**



ADDITIONAL GRADING INFORMATION

Polish **EXCELLENT**Symmetry **EXCELLENT**Fluorescence **NONE**Inscription(s) LG639457907

Comments: This Laboratory Grown Diamond was created by Chemical Vapor Deposition (CVD) growth process.
Type IIa



© IGI 2020, International Gemological Institute

FD - 10 20

www.igi.org

THIS DOCUMENT WAS PRODUCED WITH THE FOLLOWING SECURITY MEASURES: SPECIAL DOCUMENT PAPER, INK SCREENS, WATERMARK BACKGROUND DESIGNS, HOLOGRAM AND OTHER SECURITY FEATURES NOT LISTED AND DO EXCEED DOCUMENT SECURITY INDUSTRY GUIDELINES

June 22, 2024
GI Report No LG639457907
ROUND BRILLIANT

Carat Weight	1.08 CARAT
Color Grade	D
Clarity Grade	VS1
Cut Grade	IDEAL
Depth	61.8%
Table	57%
Girdle	Medium (Faceted)
Culet	Pointed
Polish	EXCELLENT
Symmetry	EXCELLENT
Fluorescence	NONE

Comments:
This Laboratory Grown Diamond was created by Chemical Vapor Deposition (CVD) growth process.