

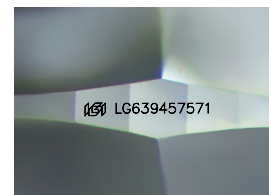
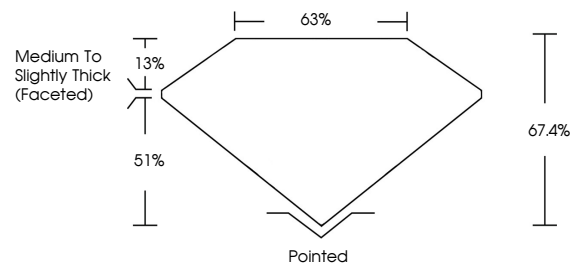


ELECTRONIC COPY

LABORATORY GROWN DIAMOND REPORT

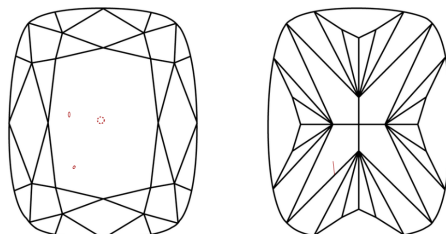
LG639457571
Report verification at [igi.org](https://www.igi.org)

PROPORTIONS



Sample Image Used

CLARITY CHARACTERISTICS



KEY TO SYMBOLS

Red symbols indicate internal characteristics.
Green symbols indicate external characteristics.

COLOR

D E F G H I J Faint Very Light Light

CLARITY

IF	VVS ^{1,2}	VS ^{1,2}	SI ^{1,2}	I ^{1,3}
Internally Flawless	Very Very Slightly Included	Very Slightly Included	Slightly Included	Included

LABORATORY GROWN DIAMOND REPORT



June 18, 2024

IGI Report Number **LG639457571**Description **LABORATORY GROWN DIAMOND**Shape and Cutting Style **CUSHION BRILLIANT**

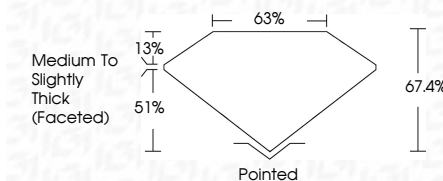
Measurements 9.05 X 6.54 X 4.41 MM

GRADING RESULTS

Carat Weight **2.03 CARATS**

Color Grade

Clarity Grade VS 2



ADDITIONAL GRADING INFORMATION

Polish **EXCELLENT**Symmetry **EXCELLENT**Fluorescence **NONE**Inscription(s)  LG639457571

Comments: This Laboratory Grown Diamond was created by Chemical Vapor Deposition (CVD) growth process.
Type IIa



© IGI 2020, International Gemological Institute

FD - 10 20



THIS DOCUMENT WAS PRODUCED WITH THE FOLLOWING SECURITY MEASURES: SPECIAL DOCUMENT PAPER, INK SCREENS, WATERMARK, BACKGROUND DESIGNS, HOLOGRAM AND OTHER SECURITY FEATURES NOT LISTED AND DO EXCEED DOCUMENT SECURITY INDUSTRY GUIDELINE

June 18, 2024
GI Report No LG639457571
CUSHION BRILLIANT

0.05 X 6.54 X .441 MM		2.03 CARATS
Carat Weight	F	
Color Grade		
Clarity Grade	VS 2	
Depth	67.4%	
Table	68%	
Graide	Medium To Slightly Thick (rounded)	
Culet	Pointed	
Polish	EXCELLENT	
Symmetry	EXCELLENT	
Flourescence	NONE	
Report Number(s)	KM1/CAS90457FZ1	

Comments:
This Laboratory Grown Diamond was created by Chemical Vapor Deposition (CVD) growth process.

www.igi.org