

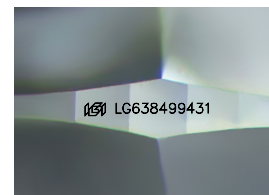
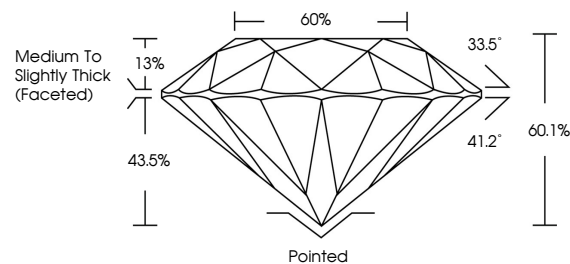


ELECTRONIC COPY

LABORATORY GROWN DIAMOND REPORT

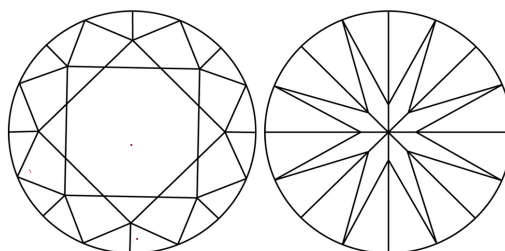
LG638499431
Report verification at lgi.org

PROPORTIONS



Sample Image Used

CLARITY CHARACTERISTICS



KEY TO SYMBOLS

Red symbols indicate internal characteristics.
Green symbols indicate external characteristics.

COLOR

D E F G H I J Faint Very Light Light

CLARITY

IF	VVS ^{1,2}	VS ^{1,2}	SI ^{1,2}	I ^{1,3}
Internally Flawless	Very Very Slightly Included	Very Slightly Included	Slightly Included	Included

LABORATORY GROWN DIAMOND REPORT



June 11, 2024

IGI Report Number **LG638499431**Description **LABORATORY GROWN DIAMOND**Shape and Cutting Style **ROUND BRILLIANT**

Measurements 9.31 - 9.35 X 5.61 MM

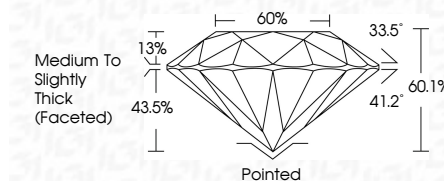
GRADING RESULTS

Carat Weight **3.01 CARATS**

Color Grade G

Clarity Grade WS 2

Cut Grade **IDEAL**



ADDITIONAL GRADING INFORMATION

Polish **EXCELLENT**Symmetry **EXCELLENT**Fluorescence NONEInscription(s) LG63849943T

Comments: This Laboratory Grown Diamond was created by Chemical Vapor Deposition (CVD) growth process.
Type IIa



IG

June 11, 2024	Report No. LG3869431	
ROUND BRILLIANT		
331 - 9.35 X 5.61 MM	3.01 CARATS	
Carat Weight	G	
Color Grade	VVS 2	
Clarity Grade	IDEAL	
Cut Grade	60.1%	
Depth	60%	
Table	Medium to Slightly Thick (Excellent)	
Girdle	Pointed	
Culet	EXCELLENT	
Polish	EXCELLENT	
Symmetry	NONE	
Fluorescence	lgg LG3869431	
Inscription(s)		
Comments:		
	The Laboratory Grown Diamond was created by Chemical Vapor Deposition (CVD) growth process.	
	Type IIA	