



ELECTRONIC COPY

LG638499419
Report verification at igi.org

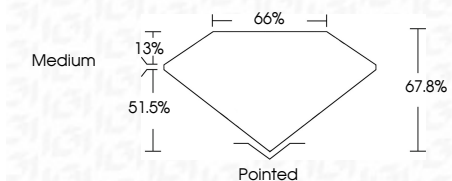


June 11, 2024
IGI Report Number **LG638499419**
Description **LABORATORY GROWN DIAMOND**
Shape and Cutting Style **CUT CORNERED
RECTANGULAR MODIFIED
BRILLIANT**

Measurements **11.83 X 8.32 X 5.64 MM**

GRADING RESULTS

Carat Weight **4.67 CARATS**
Color Grade **H**
Clarity Grade **VS 1**



ADDITIONAL GRADING INFORMATION

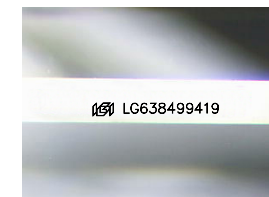
Polish **EXCELLENT**
Symmetry **EXCELLENT**
Fluorescence **NONE**
Inscription(s) **IGI LG638499419**
Comments: This Laboratory Grown Diamond was created by Chemical Vapor Deposition (CVD) growth process. Type IIa



IGI

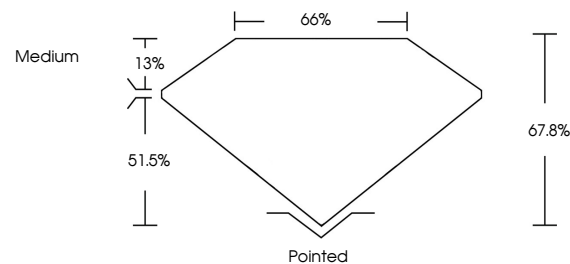
June 11, 2024
IGI Report No **LG638499419**
CUT CORNERED RECT. MODIFIED BRILLIANT
4.67 CARATS
H
4.67 CARATS
H
VS 1
67.8%
51.5%
13%
Medium
Pointed
EXCELLENT
EXCELLENT
NONE
IGI LG638499419

Comments: This Laboratory Grown Diamond was created by Chemical Vapor Deposition (CVD) growth process. Type IIa

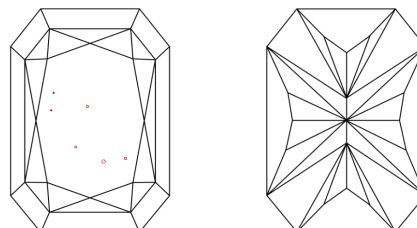


Sample Image Used

PROPORTIONS



CLARITY CHARACTERISTICS



KEY TO SYMBOLS

Red symbols indicate internal characteristics.
Green symbols indicate external characteristics.

COLOR

D E F G H I J Faint Very Light Light

CLARITY

IF	VS ¹⁻²	VS ¹⁻²	SI ¹⁻²	I ¹⁻³
Internally Flawless	Very Very Slightly Included	Very Slightly Included	Slightly Included	Included

