



**ELECTRONIC COPY**

## LABORATORY GROWN DIAMOND REPORT

June 14, 2024	
IGI Report Number	LG638450771
Description	LABORATORY GROWN DIAMOND
Shape and Cutting Style	ROUND BRILLIANT
Measurements	9.22 - 9.29 X 5.64 MM

## GRADING RESULTS

Carat Weight	3.02 CARATS
Color Grade	G
Clarity Grade	VS 1
Cut Grade	IDEAL

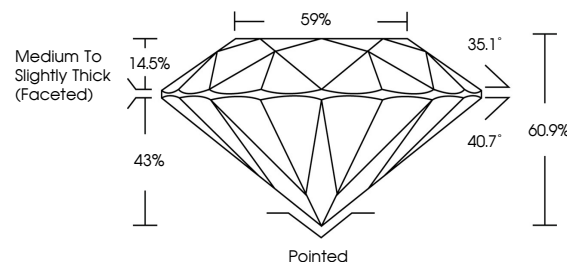
### ADDITIONAL GRADING INFORMATION

Polish	EXCELLENT
Symmetry	EXCELLENT
Fluorescence	NONE
Inscription(s)	15 LG638450771

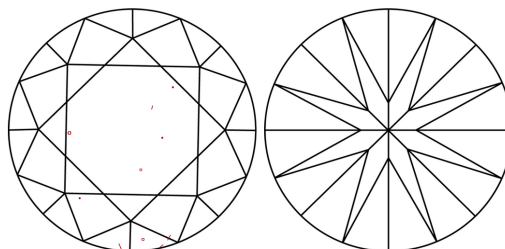
Comments: This Laboratory Grown Diamond was created by Chemical Vapor Deposition (CVD) growth process.  
Type IIa

LG638450771  
Report verification at [lgi.org](https://lgi.org)

## PROPORTIONS

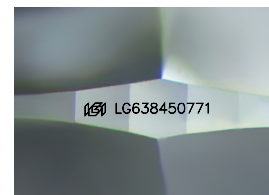


## CLARITY CHARACTERISTICS



### KEY TO SYMBOLS

Red symbols indicate internal characteristics.  
Green symbols indicate external characteristics.



Sample Image Used

## COLOR

D E F G H I J Faint Very Light Light

## CLARITY

IF	VVS <sup>1,2</sup>	VS <sup>1,2</sup>	SI <sup>1,2</sup>	I <sup>1,3</sup>
Internally Flawless	Very Very Slightly Included	Very Slightly Included	Slightly Included	Included

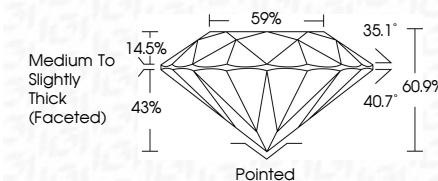
## LABORATORY GROWN DIAMOND REPORT



June 14, 2024	
IGI Report Number	LG638450771
Description	LABORATORY GROWN DIAMOND
Shape and Cutting Style	ROUND BRILLIANT
Measurements	9.22 - 9.29 X 5.64 MM

## GRADING RESULTS

Carat Weight	3.02 CARATS
Color Grade	G
Clarity Grade	VS 1
Cut Grade	IDEAL



### ADDITIONAL GRADING INFORMATION

Polish	EXCELLENT
Symmetry	EXCELLENT
Fluorescence	NONE
Inscription(s)	 LG638450771
<p>Comments: This Laboratory Grown Diamond was created by Chemical Vapor Deposition (CVD) growth process.</p> <p>Type IIa</p>	



© IGI 2020, International Gemological Institute

FD - 10 20



THIS DOCUMENT WAS PRODUCED WITH THE FOLLOWING SECURITY MEASURES: SPECIAL DOCUMENT PAPER, INK SCREENS, WATERMARK, BACKGROUND DESIGNS, HOLOGRAM AND OTHER SECURITY FEATURES NOT LISTED AND DO EXCEED DOCUMENT SECURITY INDUSTRY GUIDELINE

**www.igi.org**

June 14, 2024  
GI Report No LG638450771  
ROUND BRILLIANT

<b>9.22 - 9.23 X 5.64 MM</b>	<b>3.02 CARATS</b>	<b>G</b>
Carat Weight	Vs 1	IDEAL
Color Grade	60-9%	58%
Clarity Grade	Medium to Slightly Thick (Faceted)	Poined
Cut Grade		EXCELLENT
Depth		EXCELLENT
Table		Symmetry
Grade		Fluorescence
		NONE

**Comments:**  
This Laboratory Grown Diamond was  
created by Chemical Vapor Deposition  
(CVD) growth process.