

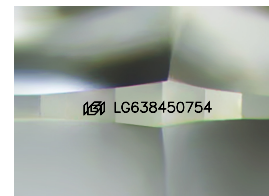
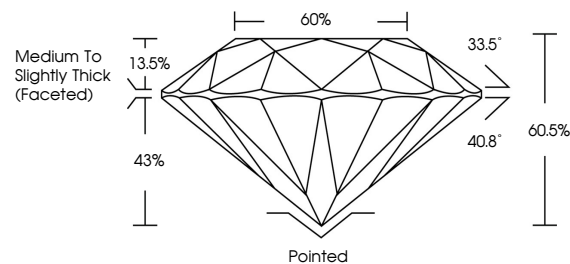


**ELECTRONIC COPY**

## LABORATORY GROWN DIAMOND REPORT

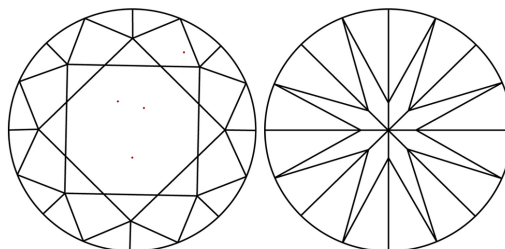
LG638450754  
Report verification at [lgi.org](https://lgi.org)

## PROPORTIONS



Sample Image Used

## CLARITY CHARACTERISTICS



## KEY TO SYMBOLS

Red symbols indicate internal characteristics.  
Green symbols indicate external characteristics.

## COLOR

D E F G H I J Faint Very Light Light

## CLARITY

IF	VVS <sup>1,2</sup>	VS <sup>1,2</sup>	SI <sup>1,2</sup>	I <sup>1,3</sup>
Internally Flawless	Very Very Slightly Included	Very Slightly Included	Slightly Included	Included

## LABORATORY GROWN DIAMOND REPORT



June 14, 2024

IGI Report Number **LG638450754**Description **LABORATORY GROWN DIAMOND**Shape and Cutting Style **ROUND BRILLIANT**

Measurements 10.21 - 10.25 X 6.19 MM

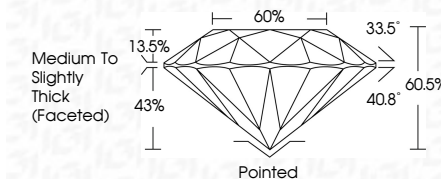
## GRADING RESULTS

Carat Weight **4.01 CARATS**

Color Grade G

Clarity Grade WS 2

Cut Grade **IDEAL**



### ADDITIONAL GRADING INFORMATION

Polish **EXCELLENT**Symmetry **EXCELLENT**Fluorescence **NONE**Inscription(s)  LG638450754

Comments: This Laboratory Grown Diamond was created by Chemical Vapor Deposition (CVD) growth process.  
Type IIa



**www.igi.org**

© IGI 2020, International Gemological Institute

FD - 10 20



THIS DOCUMENT WAS PRODUCED WITH THE FOLLOWING SECURITY MEASURES: SPECIAL DOCUMENT PAPER, INK SCREENS, WATERMARK, BACKGROUND DESIGNS, HOLOGRAM AND OTHER SECURITY FEATURES NOT LISTED AND DO EXCEED DOCUMENT SECURITY INDUSTRY GUIDELINE

June 14, 2024	GI Report No. LG3840754	ROUND BRILLIANT	10.21 - 10.25 X 6.19 MM	4.01 CARATS	G	VVS 2	IDEAL	60.6%	60%	Medium to Slightly Thick (Faceted)	Culet	Pointed	EXCELLENT	EXCELLENT	NONE	lg31636460754	Comments: The laboratory Crown Diamond was used for optical report Deposition (CVD) growth process.
			Card Weight		Color Grade	Clarity Grade	Depth	Table	Girdle			Polish	Symmetry	Fluorescence	Inscriptions(s)		Type Iia