



ELECTRONIC COPY

LABORATORY GROWN DIAMOND REPORT

June 5, 2024	
IGI Report Number	LG637454222
Description	LABORATORY GROWN DIAMOND
Shape and Cutting Style	EMERALD CUT
Measurements	8.14 X 5.99 X 4.17 MM

GRADING RESULTS

Carat Weight	1.97 CARAT
Color Grade	E
Clarity Grade	VS 2

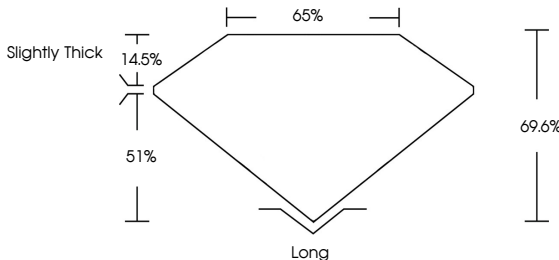
ADDITIONAL GRADING INFORMATION

Polish	EXCELLENT
Symmetry	EXCELLENT
Fluorescence	NONE
Inscription(s)	131 LG637454222

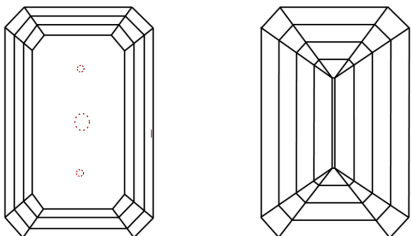
Comments: This Laboratory Grown Diamond was created by Chemical Vapor Deposition (CVD) growth process.
Type IIa

LG637454222
Report verification at igi.org

PROPORTIONS

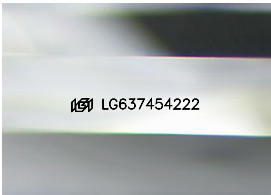


CLARITY CHARACTERISTICS



KEY TO SYMBOLS

Red symbols indicate internal characteristics.
Green symbols indicate external characteristics.



Sample Image Used

COLOR

D E F G H I J Faint Very Light Light

CLARITY

IF	VVS ¹⁻²	VS ¹⁻²	SI ¹⁻²	I ¹⁻³
Internally Flawless	Very Very Slightly Included	Very Slightly Included	Slightly Included	Included



© IGI 2020, International Gemological Institute

FD - 10 20

www.igi.org

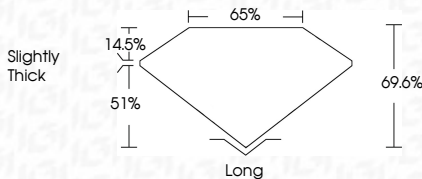
DIAMOND REPORT



June 5, 2024	
IGI Report Number	LG637454222
Description	LABORATORY GROWN DIAMOND
Shape and Cutting Style	EMERALD CUT
Measurements	8.14 X 5.99 X 4.17 MM

GRADING RESULTS

Carat Weight	1.97 CARAT
Color Grade	E
Clarity Grade	VS 2



ADDITIONAL GRADING INFORMATION

Polish	EXCELLENT
Symmetry	EXCELLENT
Fluorescence	NONE
Inscription(s)	LG LG637454222
Comments: This Laboratory Grown Diamond was created by Chemical Vapor Deposition (CVD) growth process.	
Type IIa	



IGI

June 5, 2024
IGI Report No LG637454222

EMERALD CUT	
18.14 X 5.99 X 4.17 MM	
Carat Weight	1.97 CARAT
Color Grade	E
Clarity Grade	VS 2
Depth	69.6%
Table	65%
Girdle	Slightly Thick
Culet	Long
Polish	EXCELLENT
Symmetry	EXCELLENT
Fluorescence	NONE
Inspection(s)	4881 G537454072

Comments:
This Laboratory Grown Diamond was created by Chemical Vapor Deposition (CVD) growth process.
Type IIa

THIS DOCUMENT WAS PRODUCED WITH THE FOLLOWING SECURITY MEASURES: SPECIAL DOCUMENT PAPER, INK SCREENS, WATERMARK BACKGROUND DESIGNS, HOLOGRAM AND OTHER SECURITY FEATURES NOT LISTED AND DO EXCEED DOCUMENT SECURITY INDUSTRY GUIDELINES.