

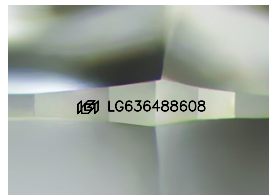
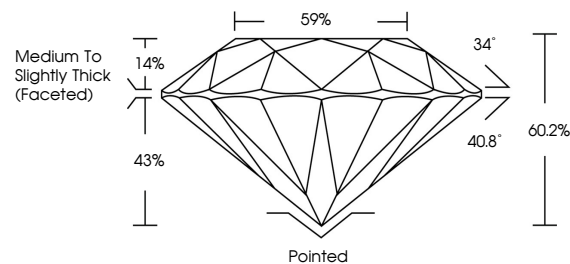


**ELECTRONIC COPY**

## LABORATORY GROWN DIAMOND REPORT

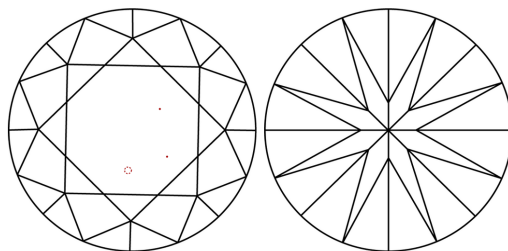
LG636488608  
Report verification at [igi.org](https://igi.org)

## PROPORTIONS



Sample Image Used

## CLARITY CHARACTERISTICS



## KEY TO SYMBOLS

Red symbols indicate internal characteristics.  
Green symbols indicate external characteristics.

## COLOR

D E F G H I J Faint Very Light Light

## CLARITY

IF	WVS <sup>1-2</sup>	VS <sup>1-2</sup>	SI <sup>1-2</sup>	I <sup>1-3</sup>
Internally Flawless	Very Very Slightly Included	Very Slightly Included	Slightly Included	Included



© IGI 2020, International Gemological Institute

FD - 10 20

**www.igi.org**

## DIAMOND REPORT



May 29, 2024

IGI Report Number LG636488608

Description **LABORATORY GROWN DIAMOND**Shape and Cutting Style **ROUND BRILLIANT**

Measurements 10.11 - 10.19 X 6.09 MM

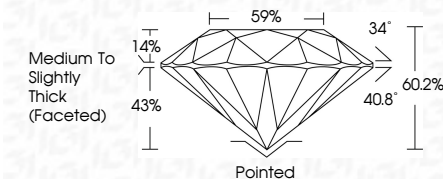
## GRADING RESULTS

Carat Weight 3.83 CARATS

Color Grade G

Clarity Grade VS 1

Cut Grade **IDEAL**



### ADDITIONAL GRADING INFORMATION

Polish EXCELLENT

Symmetry **EXCELLENT**Fluorescence **NONE**Inscription(s)  LG636488608

Comments: This Laboratory Grown Diamond was created by Chemical Vapor Deposition (CVD) growth process.  
Type IIa



IG

May 29, 2024	GI Report No LG5348808	ROUND BRILLIANT	10.11 - 10.19 X 6.09 MM	3.83 CARATS	G	Vs 1	IDEAL	60.2%	0%	Medium to Slightly Thick Faceted	Polished	EXCELLENT	EXCELLENT	NONE	#69 LG5348808	Comments: This Laboratory Grown Diamond was created by Chemical Vapor Deposition (CVD) growth process. Type IIa
					Color Grade	Clarity Grade	Cut Grade	Depth	Table	Girdle	Culet	Polish	Symmetry	Fluorescence	Inclusions(s)	