



ELECTRONIC COPY

LABORATORY GROWN DIAMOND REPORT

May 24, 2024
IGI Report Number LG636447440
Description LABORATORY GROWN DIAMOND
Shape and Cutting Style PRINCESS CUT
Measurements 7.05 X 6.88 X 4.84 MM

GRADING RESULTS

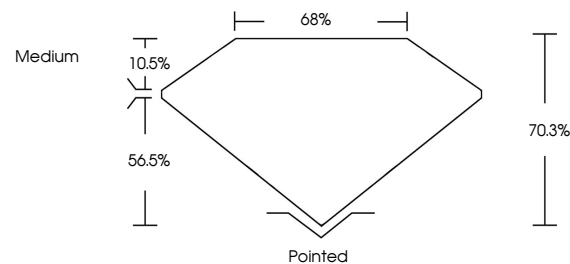
Carat Weight 1.96 CARAT
Color Grade E
Clarity Grade VS 1

ADDITIONAL GRADING INFORMATION

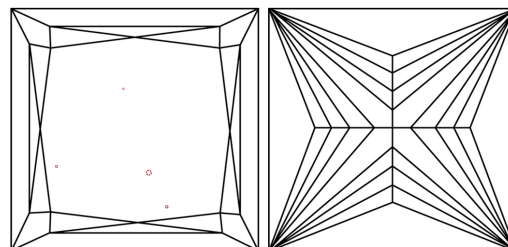
Polish EXCELLENT
Symmetry EXCELLENT
Fluorescence NONE
Inscription(s) IGI LG636447440

Comments: This Laboratory Grown Diamond was created by Chemical Vapor Deposition (CVD) growth process.
Type IIa

PROPORTIONS

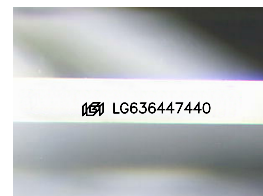


CLARITY CHARACTERISTICS



KEY TO SYMBOLS

Red symbols indicate internal characteristics.
Green symbols indicate external characteristics.



Sample Image Used

COLOR

D E F G H I J Faint Very Light Light

CLARITY

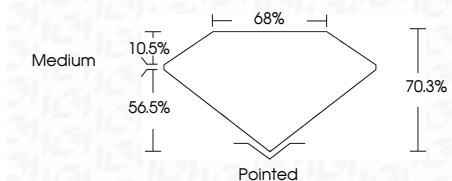
IF VS 1-2 VS 1-2 SI 1-2 I 1-3
Internally Flawless Very Very Slightly Included Very Slightly Included Slightly Included Included



May 24, 2024
IGI Report Number LG636447440
Description LABORATORY GROWN DIAMOND
Shape and Cutting Style PRINCESS CUT
Measurements 7.05 X 6.88 X 4.84 MM

GRADING RESULTS

Carat Weight 1.96 CARAT
Color Grade E
Clarity Grade VS 1



ADDITIONAL GRADING INFORMATION

Polish EXCELLENT
Symmetry EXCELLENT
Fluorescence NONE
Inscription(s) IGI LG636447440
Comments: This Laboratory Grown Diamond was created by Chemical Vapor Deposition (CVD) growth process.
Type IIa



IGI



May 24, 2024
IGI Report No. LG636447440
PRINCESS CUT
7.05 X 6.88 X 4.84 MM
1.96 CARAT
E
VS 1
70.3%
65%
Medium
Pointed
EXCELLENT
EXCELLENT
NONE
IGI LG636447440
Comments: This Laboratory Grown Diamond was created by Chemical Vapor Deposition (CVD) growth process.
Type IIa