



**ELECTRONIC COPY**

## LABORATORY GROWN DIAMOND REPORT

June 4, 2024	
IGI Report Number	LG636433945
Description	LABORATORY GROWN DIAMOND
Shape and Cutting Style	ROUND BRILLIANT
Measurements	9.17 - 9.15 X 5.80 MM

## GRADING RESULTS

Carat Weight	3.00 CARATS
Color Grade	E
Clarity Grade	SI 1
Cut Grade	EXCELLENT

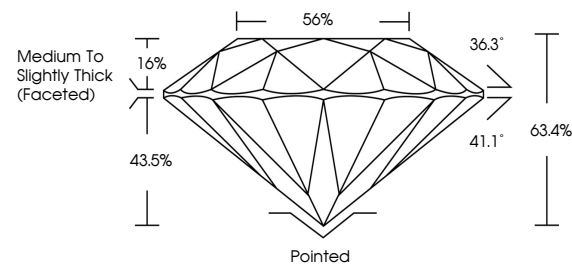
### ADDITIONAL GRADING INFORMATION

Polish	EXCELLENT
Symmetry	EXCELLENT
Fluorescence	NONE
Inscription(s)	 LG636433945

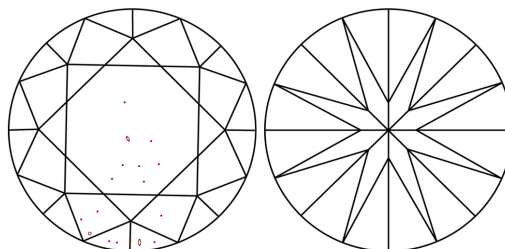
Comments: This Laboratory Grown Diamond was created by Chemical Vapor Deposition (CVD) growth process.  
Type IIa

LG636433945  
Report verification at [igi.org](https://igi.org)

## PROPORTIONS

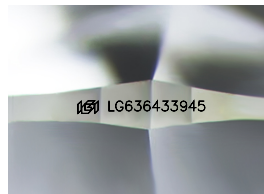


## CLARITY CHARACTERISTICS



## KEY TO SYMBOLS

Red symbols indicate internal characteristics.  
Green symbols indicate external characteristics.



Sample Image Used

**COLOR**

D E F G H I J Faint Very Light Light

## CLARITY

IF	VVS <sup>1-2</sup>	VS <sup>1-2</sup>	SI <sup>1-2</sup>	I <sup>1-3</sup>
Internally Flawless	Very Very Slightly Included	Very Slightly Included	Slightly Included	Included



© IGI 2020, International Gemological Institute

FD - 10 20

**www.igi.org**

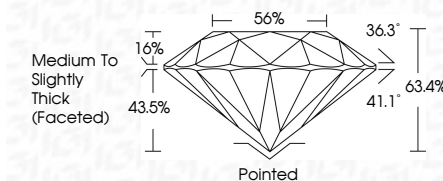
DIAMOND REPORT



June 4, 2024	
IGI Report Number	LG636433945
Description	LABORATORY GROWN DIAMOND
Shape and Cutting Style	ROUND BRILLIANT
Measurements	9.17 - 9.15 X 5.80 MM

## GRADING RESULTS

Carat Weight	3.00 CARATS
Color Grade	E
Clarity Grade	SI 1
Cut Grade	EXCELLENT



### ADDITIONAL GRADING INFORMATION

Polish	EXCELLENT
Symmetry	EXCELLENT
Fluorescence	NONE
Inscription(s)	 LG636433945
Comments: This Laboratory Grown Diamond was created by Chemical Vapor Deposition (CVD) growth process.	
Type IIa	



June 4, 2024	Report No. LG56433945	3.00 CARATS
ROUND BRILLIANT		
17 - 9.15 X 5.80 MM		
Color Weight	E	
Color Grade	S1	
Clarity Grade	EXCELLENT	
Cut Grade	63.4%	
Depth	55%	
Table	Medium to slightly thick faceted	
Girdle		
Culet	Pointed	
Polish	EXCELLENT	
Symmetry	EXCELLENT	
Fluorescence	NONE	
Inscriptions(s)	lgf LG56433945	

Comments:  
This Laboratory Grown Diamond was created by Chemical Vapor Deposition (CVD) growth process.  
Type IIa