

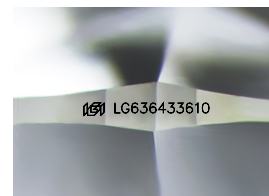
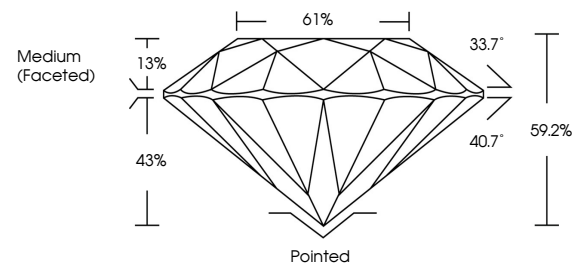


ELECTRONIC COPY

LABORATORY GROWN DIAMOND REPORT

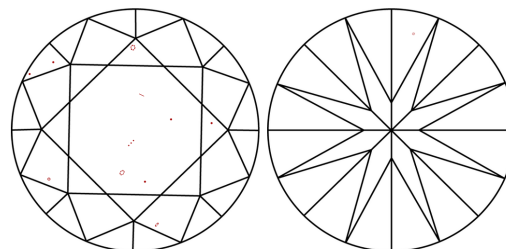
LG636433610
Report verification at igi.org

PROPORTIONS



Sample Image Used

CLARITY CHARACTERISTICS



KEY TO SYMBOLS

Red symbols indicate internal characteristics.
Green symbols indicate external characteristics.

COLOR

D E F G H I J Faint Very Light Light

CLARITY

IF	VVS ¹⁻²	VS ¹⁻²	SI ¹⁻²	I ¹⁻³
Internally Flawless	Very Very Slightly Included	Very Slightly Included	Slightly Included	Included



© IGI 2020, International Gemological Institute

FD - 10 20

www.igi.org

DIAMOND REPORT



June 4, 2024

IGI Report Number **LG636433610**Description **LABORATORY GROWN DIAMOND**Shape and Cutting Style **ROUND BRILLIANT**

Measurements 8.15 - 8.19 X 4.83 MM

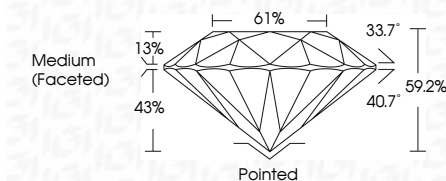
GRADING RESULTS

Carat Weight **1.96 CARAT**

Color Grade	E
-------------	---

Clarity Grade VS 2

Cut Grade **EXCELLENT**



ADDITIONAL GRADING INFORMATION

Polish **EXCELLENCE**Symmetry **EXCELLENCE**

Fluorescence NONI

Inscription(s) LG636433610

Comments: This Laboratory Grown Diamond was created by Chemical Vapor Deposition (CVD) growth process.
Type IIa



June 4, 2024	Carat Weight	1.94 CARAT
G1 Report No. G556433610	Color Grade	E
ROUND BRILLIANT	Clarity Grade	VS 2
15.15 - 11.19 X 4.83 MM	Depth	EXCELLENT
	Table	59.2%
	Girdle	61%
	Culet	Medium (Faceted)
	Polish	Partied
	Symmetry	EXCELLENT
	Fluorescence	EXCELLENT
	Inscriptions(s)	NONE
		kgf1556433610

Comments:

The Laboratory Grown Diamond was created by Chemical Vapor Deposition growth process.

Type IIa