



**ELECTRONIC COPY**

## LABORATORY GROWN DIAMOND REPORT

June 3, 2024	
IGI Report Number	LG636428332
Description	LABORATORY GROWN DIAMOND
Shape and Cutting Style	ROUND BRILLIANT
Measurements	10.42 - 10.49 X 6.19 MM

## GRADING RESULTS

Carat Weight	4.12 CARATS
Color Grade	G
Clarity Grade	VVS 2
Cut Grade	IDEAL

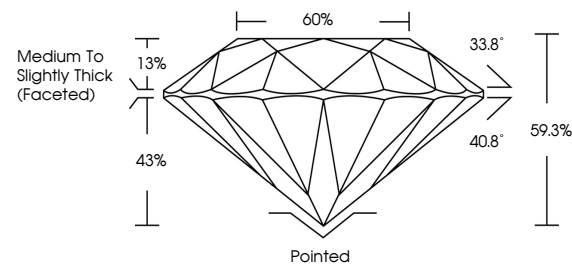
### ADDITIONAL GRADING INFORMATION

Polish	EXCELLENT
Symmetry	EXCELLENT
Fluorescence	NONE
Inscription(s)	 LG636428332

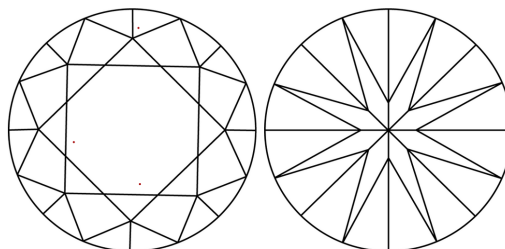
Comments: This Laboratory Grown Diamond was created by Chemical Vapor Deposition (CVD) growth process.  
Type IIa

LG636428332  
Report verification at [igi.org](https://igi.org)

## PROPORTIONS

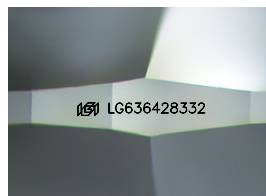


## CLARITY CHARACTERISTICS



## KEY TO SYMBOLS

Red symbols indicate internal characteristics.  
Green symbols indicate external characteristics.



Sample Image Used

**COLOR**

D E F G H I J Faint Very Light Light

## CLARITY

IF	VVS <sup>1-2</sup>	VS <sup>1-2</sup>	SI <sup>1-2</sup>	I <sup>1-3</sup>
Internally Flawless	Very Very Slightly Included	Very Slightly Included	Slightly Included	Included



© IGI 2020, International Gemological Institute

FD - 10 20

**www.igi.org**

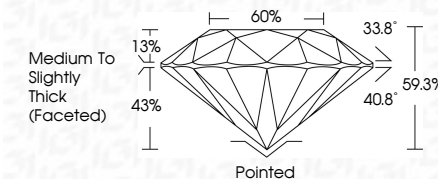
DIAMOND REPORT



June 3, 2024	
IGI Report Number	LG636428332
Description	LABORATORY GROWN DIAMOND
Shape and Cutting Style	ROUND BRILLIANT
Measurements	10.42 - 10.49 X 6.19 MM

## GRADING RESULTS

Carat Weight	4.12 CARATS
Color Grade	G
Clarity Grade	VVS 2
Cut Grade	IDEAL



### ADDITIONAL GRADING INFORMATION

Polish	EXCELLENT
Symmetry	EXCELLENT
Fluorescence	NONE
Inscription(s)	 LG636428332
<p>Comments: This Laboratory Grown Diamond was created by Chemical Vapor Deposition (CVD) growth process.</p> <p>Type IIa</p>	



June 3, 2024	Carat Weight	4.12 CARATS
GJ Report No. LG564268332	Color Grade	G
ROUND-BRILLIANT	Clarity Grade	VVS 2
10.02 - 10.49 X 6.19 MM	Cut Grade	IDEAL
	Depth	59.3%
	Table	65%
	Grille	Medium to slightly Thick Faceted
	Culet	Pointed
	Polish	EXCELLENT
	Symmetry	EXCELLENT
	Fluorescence	NONE
	Inscriptions(s)	lgf LG564268332

Comments:

This Laboratory Grown Diamond was created by Chemical Vapor Deposition (CVD) using the Hot Filament Type II process.