

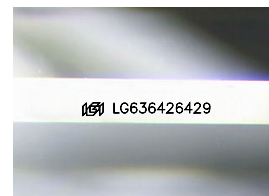
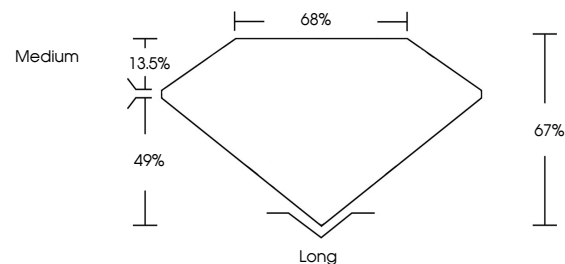


**ELECTRONIC COPY**

## LABORATORY GROWN DIAMOND REPORT

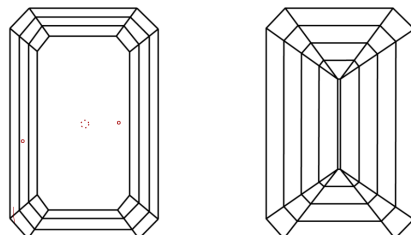
LG636426429  
Report verification at [igi.org](https://igi.org)

## PROPORTIONS



Sample Image Used

## CLARITY CHARACTERISTICS



## KEY TO SYMBOLS

Red symbols indicate internal characteristics.  
Green symbols indicate external characteristics.

**COLOR**

D E F G H I J Faint Very Light Light

## CLARITY

IF	VVS <sup>1-2</sup>	VS <sup>1-2</sup>	SI <sup>1-2</sup>	I <sup>1-3</sup>
Internally Flawless	Very Very Slightly Included	Very Slightly Included	Slightly Included	Included



© IGI 2020, International Gemological Institute

FD - 10 20

**www.igi.org**

## DIAMOND REPORT



June 3, 2024

IGI Report Number **LG636426429**Description **LABORATORY GROWN DIAMOND**Shape and Cutting Style **EMERALD CUT**

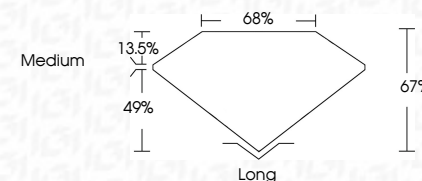
Measurements 9.23 X 6.34 X 4.25 MM

## GRADING RESULTS

Carat Weight 2.43 CARATS

Color Grade

Clarity Grade VS 1



### ADDITIONAL GRADING INFORMATION

Polish **EXCELLENT**Symmetry **EXCELLENT**Fluorescence **NONE**Inscription(s)  LG636426429

Comments: This Laboratory Grown Diamond was created by Chemical Vapor Deposition (CVD) growth process.  
Type IIa



June 3, 2024  
 IGI Report No LG636426429

GI Report No. ICS3666929	2.23 X 3.34 X 4.25 MM	Carat Weight	2.43 CARATS
GENERATED CUT	Color Grade	F	
	Clarity Grade	VS 1	
	Depth	67%	
	Table	68%	
	Grade	Medium	
	Culet	Long	
	Polish	EXCELLENT	
	Symmetry	EXCELLENT	
	Fluorescence	NONE	

**Comments:**  
This Laboratory Grown Diamond was created by Chemical Vapor Deposition (CVD) growth process.